



Hays Mews, W1J

£1,950 Per week

Dexters



Hays Mews, W1J

This three bedroom mews apartment, located off Berkeley Square has been refurbished to an excellent standard throughout.

Boasting excellent dining and entertaining space, the double reception room is split across two levels. The upper level has an open plan kitchen, breakfast bar and dining space and the lower level provides the reception room for relaxing or entertaining guests.

The two large double bedrooms both benefit from built-in storage and luxury en suite bathrooms. The third bedroom can double up as a study space with additional guest WC.

The property has been recently renovated offering wooden flooring and contemporary fixtures, fittings and furnishings throughout.

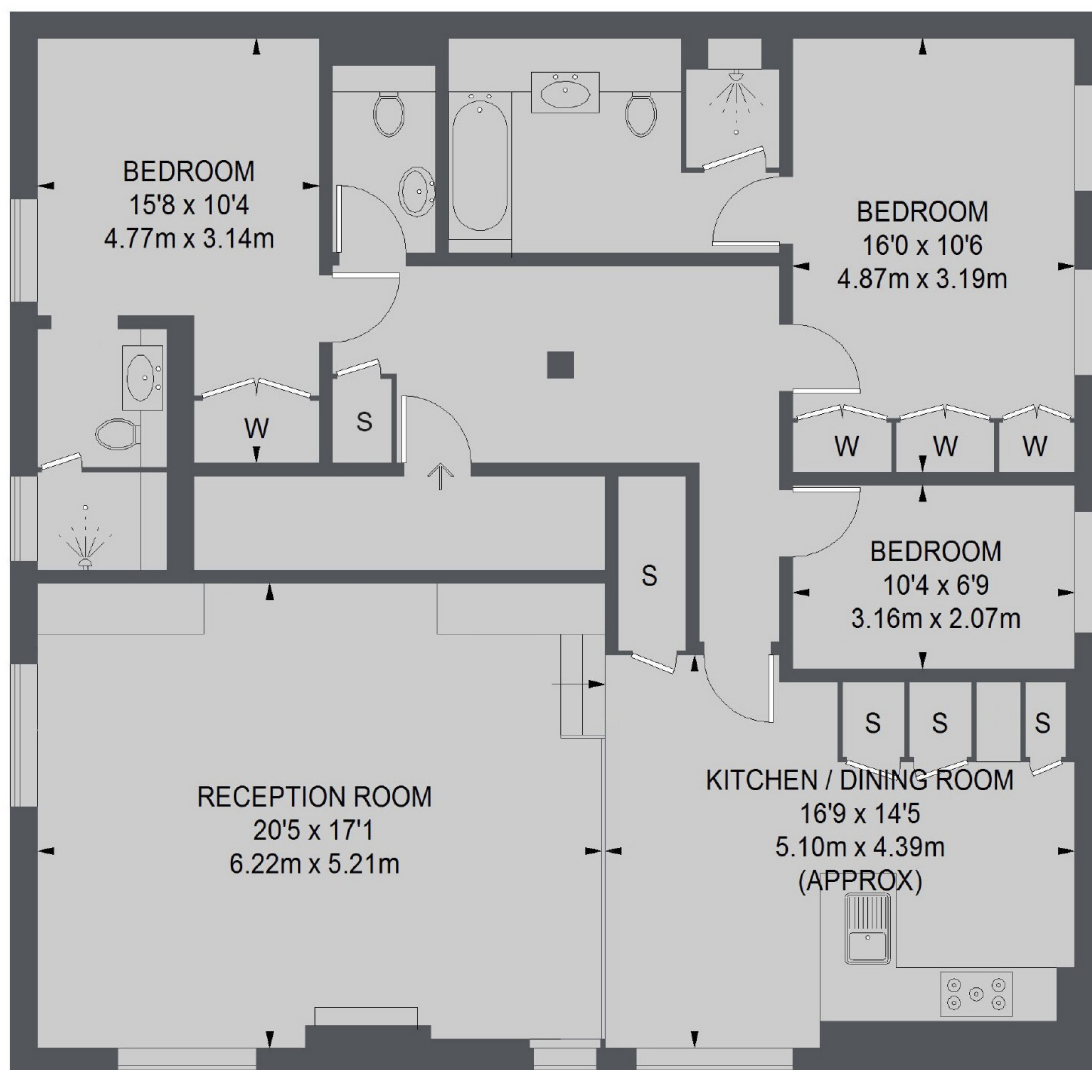
The apartment is located on the corner of Hays Mews and Chesterfield Hill, close to the open spaces of Green Park and Hyde Park.

Features

- Three Bedrooms
- Recently Refurbished
- Split-Level Reception
- Two Bathrooms
- Contemporary Finish
- Excellent Location



Hays Mews, London, W1J



FIRST FLOOR

TOTAL APPROX. FLOOR AREA
(EXCLUDING COMMUNAL AREA)
1359 SQ. FT. (126.25 SQ. M.)

Dexters

Dexters Mayfair
102 Mount Street
London
W1K 2TH
Lettings
020 7590 9595

Energy Rating: E. We aim to make our particulars both accurate and reliable. However they are not guaranteed; nor do they form part of an offer or contract. If you require clarification on any points then please contact us, especially if you're traveling some distance to view. Please note that appliances and heating systems have not been tested and therefore no warranties can be given as to their good working order.

RICS Regulated
Estate Agent
and Letting Agent

dexters.co.uk