



## Blackburnes Mews, W1K

£750 Per week

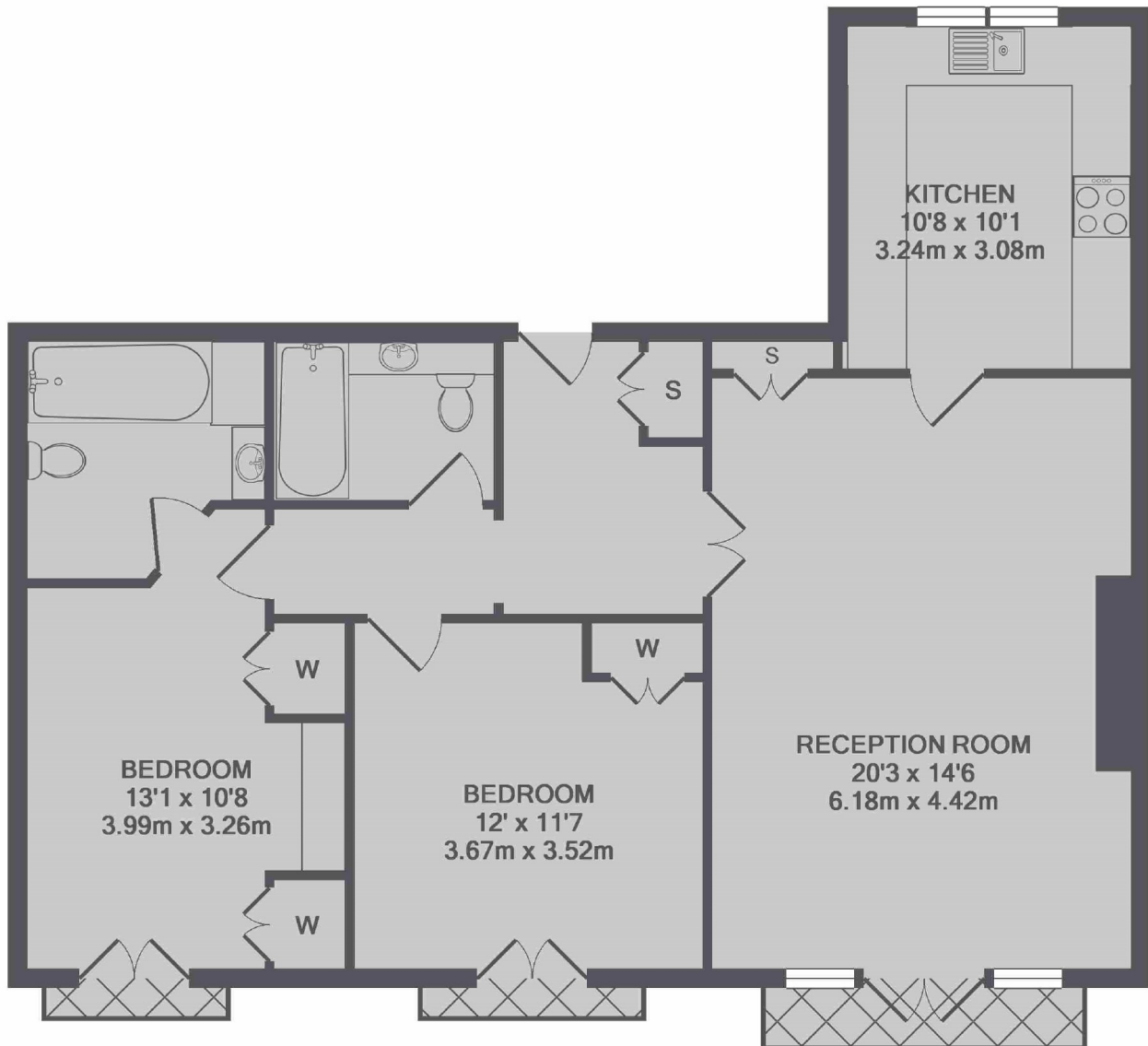
A two double bedroom apartment on the first floor of a secure gated mews development to the West of Grosvenor Square.

Located close to Bond Street and Marble Arch underground stations, Oxford Street and the world class shops and restaurants of Mayfair.

### Features

- Two Double Bedrooms
- Two Bathrooms
- First Floor
- French Windows
- Lift Access
- Excellent Location

## Blackburnes Mews, London, W1K



TOTAL APPROX. FLOOR AREA 920 SQ.FT. (85.5 SQ.M.)

### Contact

To arrange a viewing call our office on the number below or visit our website.



Energy Rating: B. We aim to make our particulars both accurate and reliable. However they are not guaranteed; nor do they form part of an offer or contract. If you require clarification on any points then please contact us, especially if you're traveling some distance to view. Please note that appliances and heating systems have not been tested and therefore no warranties can be given as to their good working order.