

## Albemarle Street, W1S

£700 Per week

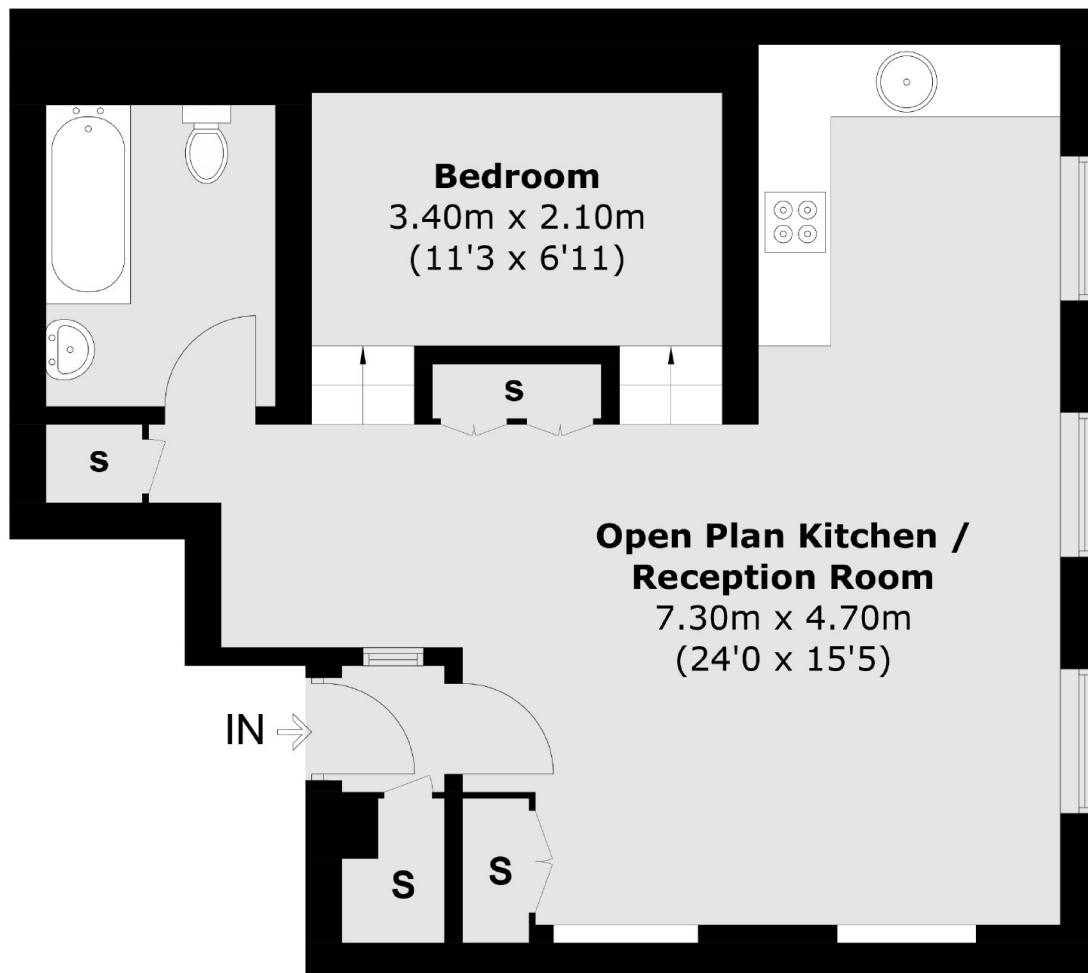
A recently decorated apartment located in an attractive Georgian building with mezzanine level with double bedroom.

Albemarle Street is ideal for Green Park tube station on the Piccadilly, Victoria and Jubilee lines. Piccadilly Circus and the amenities and attractions of the West End are close by.

### Features

- Mezzanine Sleeping Area
- High Ceilings
- Wooden Flooring
- Modern Fixtures & Fittings
- Built-In Storage
- Excellent Location

# Albemarle Street, London, W1S



## Third Floor

Total area (approx.): 54 sq. m (586 sq. ft)

# Dexters

Mayfair  
102 Mount Street  
London  
W1K 2TH  
Lettings  
020 7529 5588

Energy Rating: C. We aim to make our particulars both accurate and reliable. However they are not guaranteed; nor do they form part of an offer or contract. If you require clarification on any points then please contact us, especially if you're traveling some distance to view. Please note that appliances and heating systems have not been tested and therefore no warranties can be given as to their good working order.

 **RICS** | Regulated  
Estate Agent  
and Letting Agent

dexters.co.uk