



Charles Street, W1J

£690 Per week

A bright and spacious studio apartment located in this beautiful period building within walking distance to Berkeley Square and Green Park Underground station.

Set in the heart of peaceful Mayfair Village this magnificent property is only a few streets away from some of the world's finest restaurants and luxury retail destinations.

Features

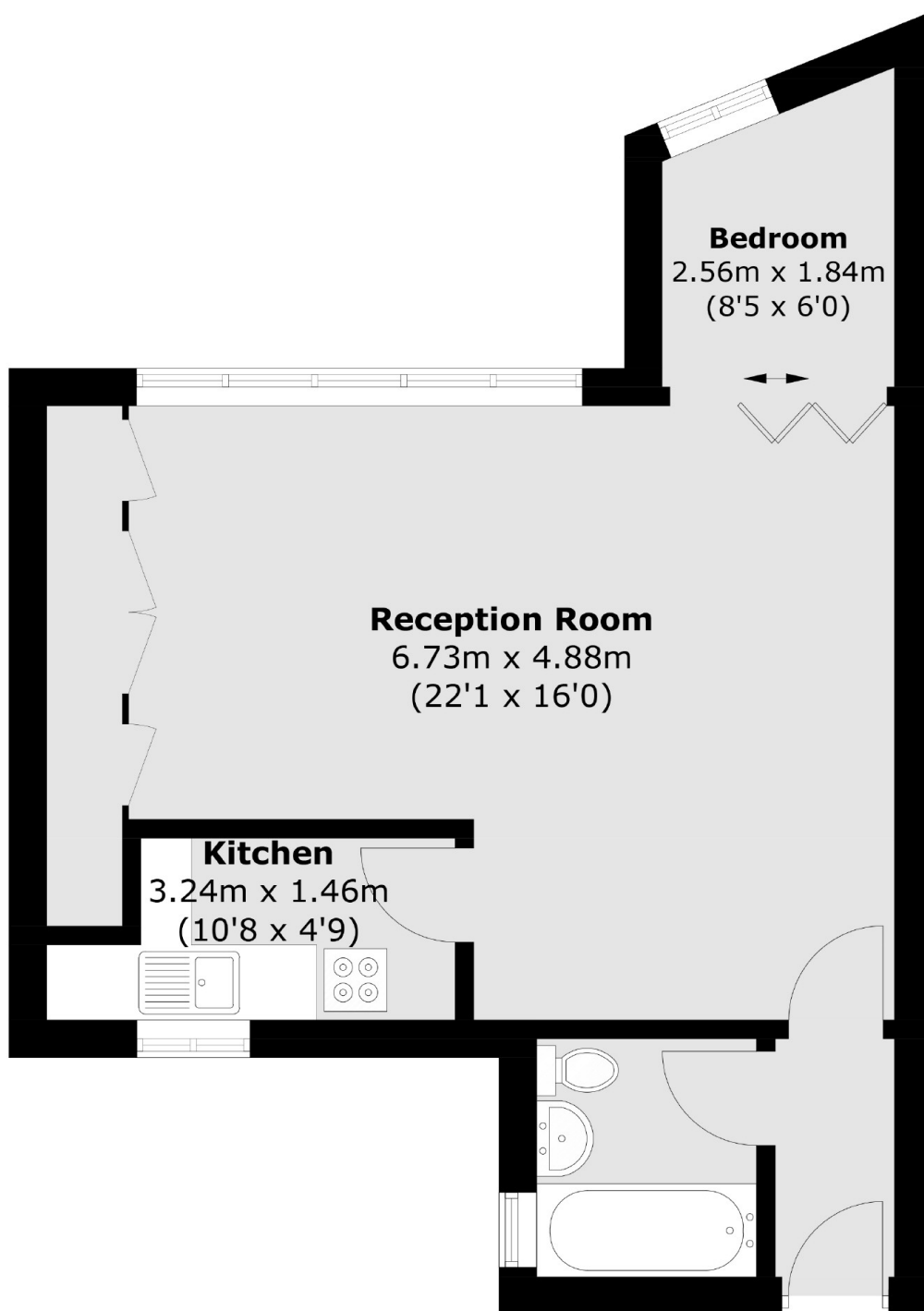
- Well-Appointed Studio
- Grade II Listed Building
- New Bathroom
- High Ceilings
- Excellent Location
- Furnished



Charles Street, W1J



Charles Street, London, W1J



Total area (approx.): 43.3 sq. m (466.1 sq. ft)

Dexters

Mayfair
102 Mount Street
London
W1K 2TH
Lettings
020 7529 5588

Energy Rating: D. We aim to make our particulars both accurate and reliable. However they are not guaranteed; nor do they form part of an offer or contract. If you require clarification on any points then please contact us, especially if you're traveling some distance to view. Please note that appliances and heating systems have not been tested and therefore no warranties can be given as to their good working order.

 **RICS** | Regulated
Estate Agent
and Letting Agent

[dexters.co.uk](https://www.dexters.co.uk)