



## Albemarle Street, W1S

£790 Per week

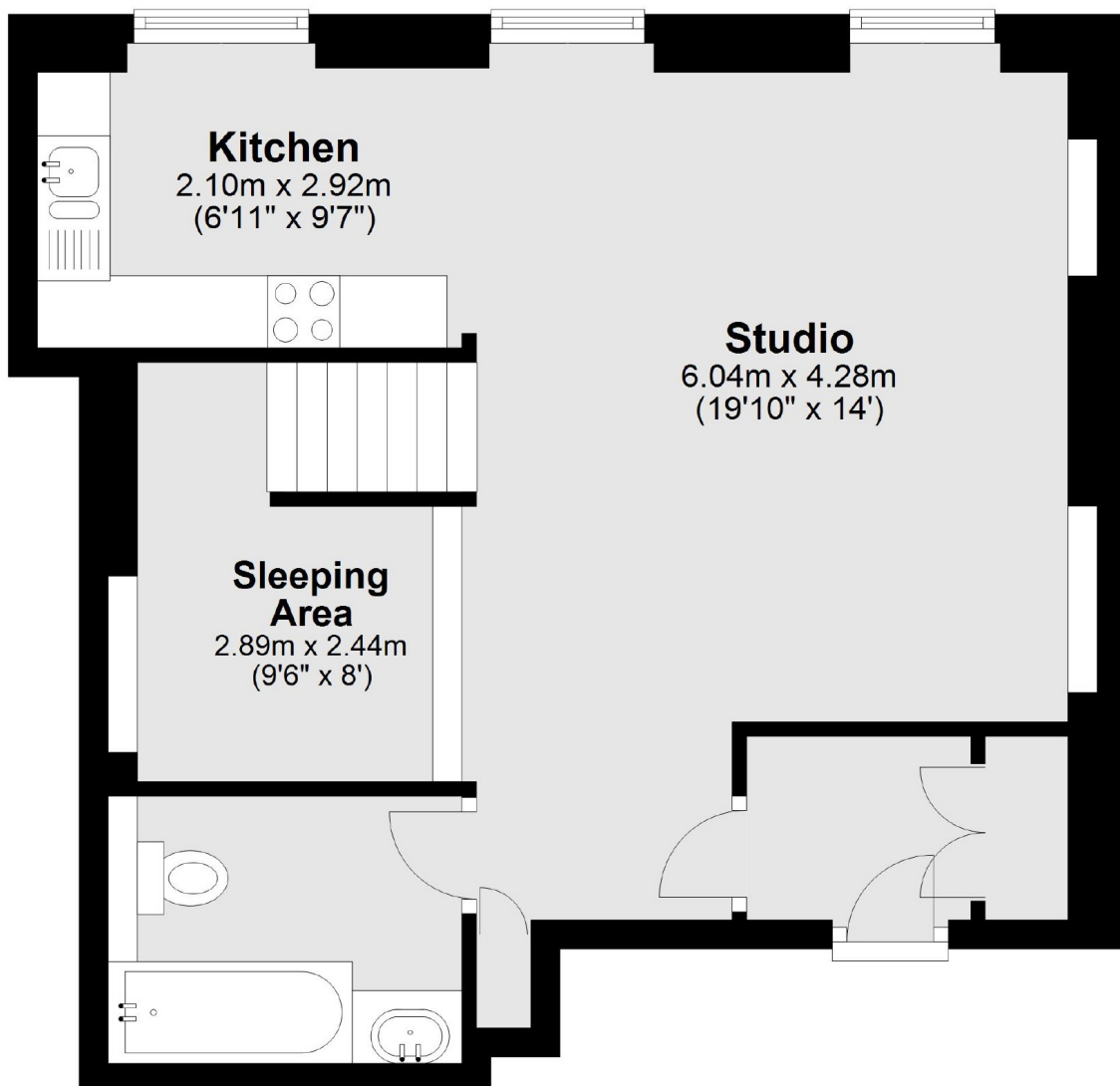
A studio apartment located on the second floor of this attractive Georgian building in a prestigious central Mayfair location.

Albemarle Street is ideally located for Green Park tube station on the Piccadilly, Victoria and Jubilee lines. Piccadilly Circus and the amenities and attractions of the West End are close by.

### Features

- Spacious Studio
- Wooden Flooring
- Modern Fixtures & Fittings
- Lift Access
- Mezzanine Sleeping Area
- Excellent Location

# Albemarle Street, London, W1S



Total area: approx. 44.9 sq. metres (483.8 sq. feet)