



## South Audley Street, W1K

£923 Per week

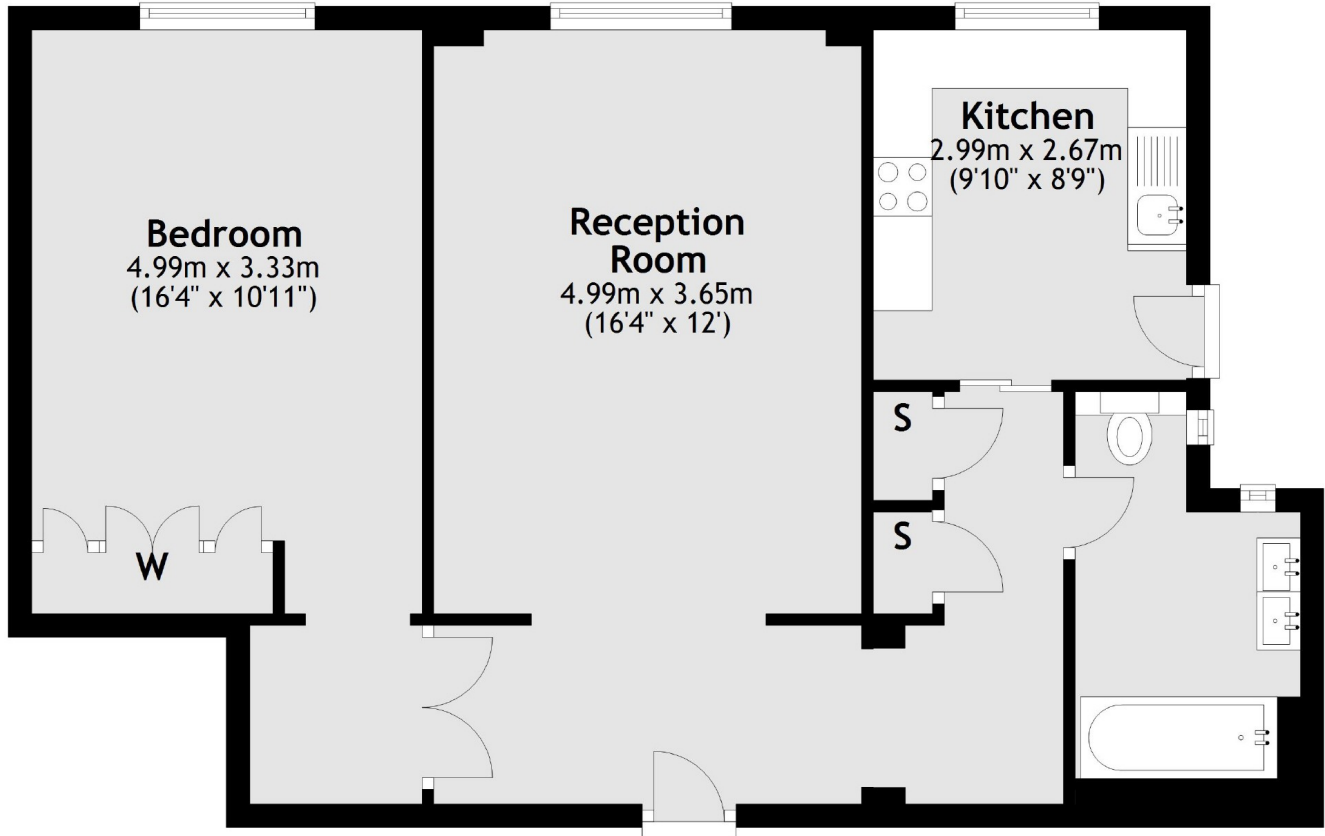
This recently renovated one bedroom apartment is situated on the first floor of this period building located close to Hyde Park.

In the heart of Mayfair this property is close to the green spaces of Hyde Park, Green Park and the world famous shops and restaurants of Mayfair.

### Features

- Spacious Double Bedroom
- Lift Access
- 24-Hour Porter
- Luxury Renovation
- Reception Room
- Wood Flooring

# South Audley Street, London, W1K



## First Floor

Total area: approx. 64.5 sq. metres (694.4 sq. feet)