



Upper Grosvenor Street, W1K

£7,500 Per week

**Dexters**





## Upper Grosvenor Street, W1K

An impressive four bedroom split-level apartment with modern appliances, 18th century period features and high ceilings throughout.

The property benefits from a lift and has been designed to create a stunning entertaining space and includes an integrated security and sound system as well as air conditioning throughout.

The apartment boasts 4 meter ceiling heights on the ground floor, a stunning double reception room with working gas fireplace and a modern fully fitted kitchen with connecting dining room. There is also a study and guest cloakroom.

The lower ground floor consists of a stunning master bedroom with direct access to the main patio, large walk in wardrobe and stunning principle suite. There are three further bedrooms and three bathrooms on the lower ground floor as well as a smaller patio.

Situated off of Grosvenor Square, this apartment is conveniently located for Hyde Park. Nearby underground stations include Bond Street (Central and Jubilee lines), Marble Arch (Central Line) and Hyde Park (Piccadilly line).

### Features

- Four Bedrooms
- Guest Cloakroom
- John Cullen Lighting
- Integrated Sound System
- Air Conditioning
- Private Patio





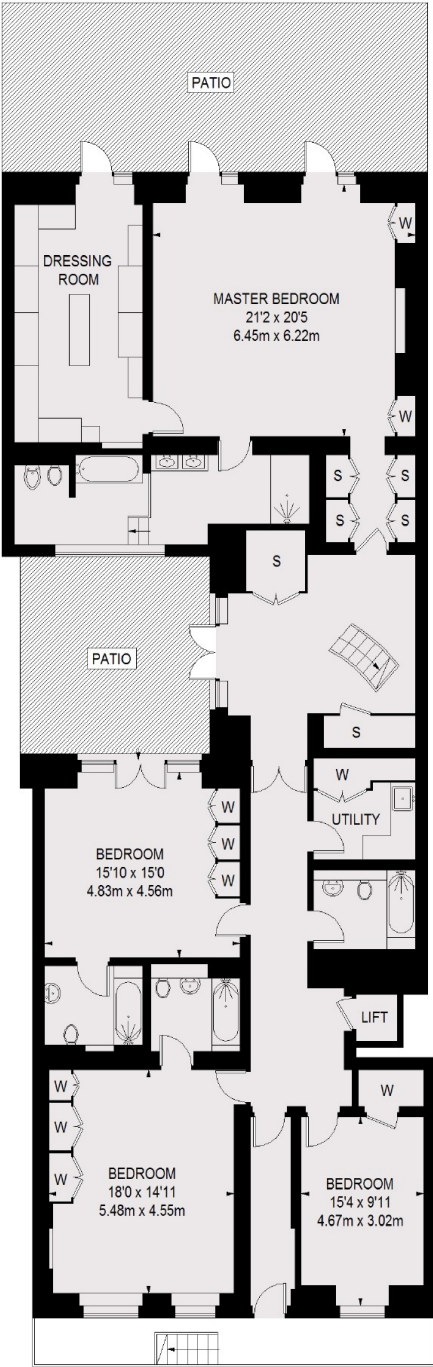




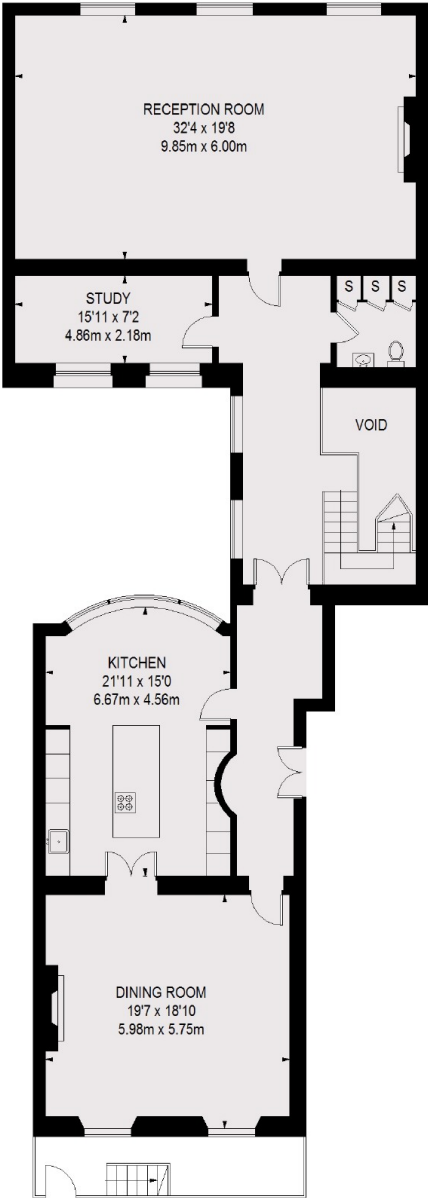




Upper Grosvenor Street,  
London, W1K



LOWER GROUND FLOOR



GROUND FLOOR

TOTAL APPROX. FLOOR AREA (EXCLUDING VOID / LIFT)  
4291 SQ FT. (398.65 SQ M)