



## Park Street, W1K

£2,075 Per week

A recently refurbished two double bedroom apartment located on the sixth floor of this modern building with 24-hour security and lift.

Park Street is conveniently situated to enjoy some of the best shopping, restaurants and bars in the area.

### Features

- Two Double Bedrooms
- Two Bathrooms
- Air Cooling
- 24 Hour Concierge
- Close To Hyde Park
- Excellent Location

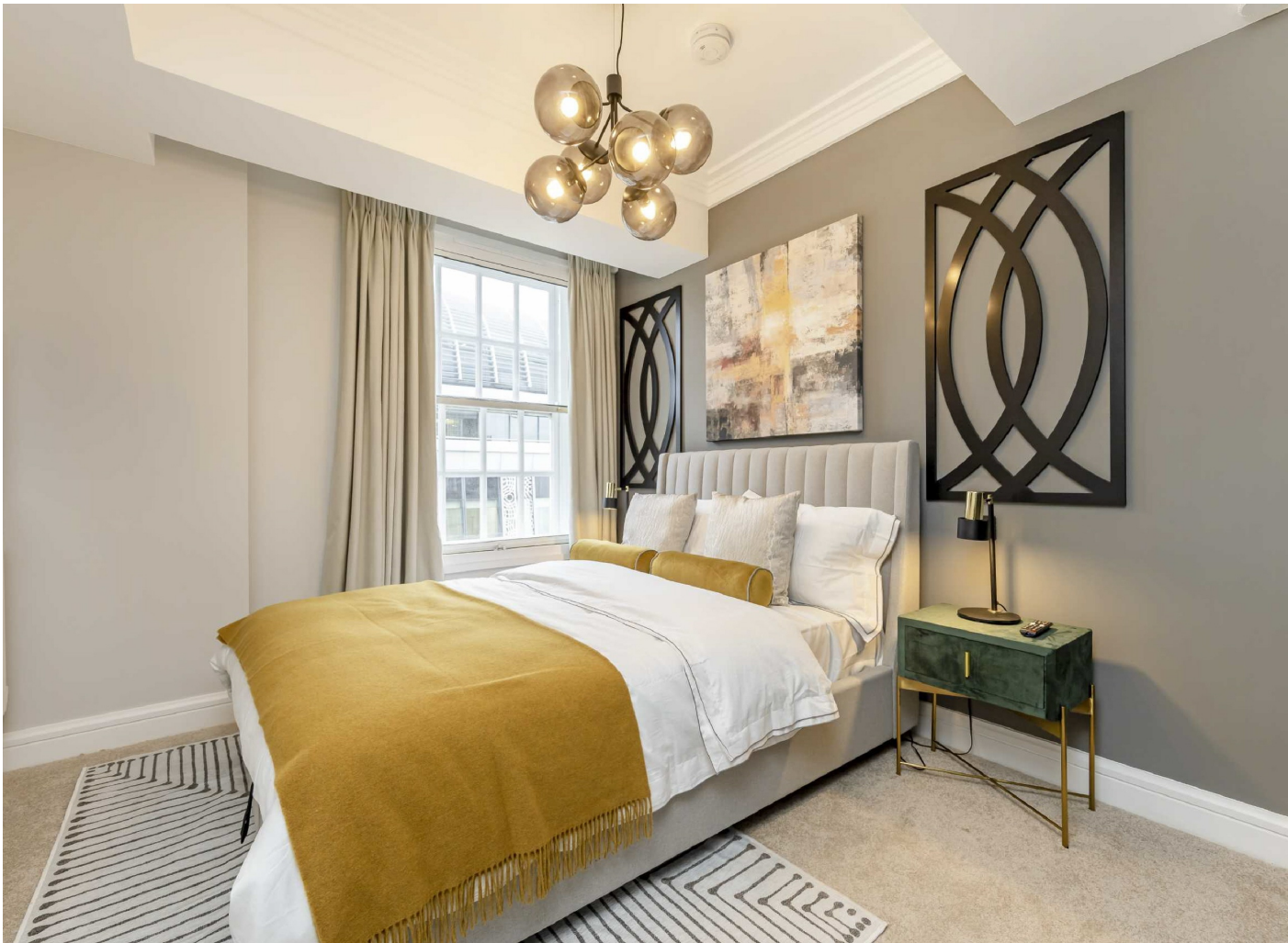


## Park Street, W1K

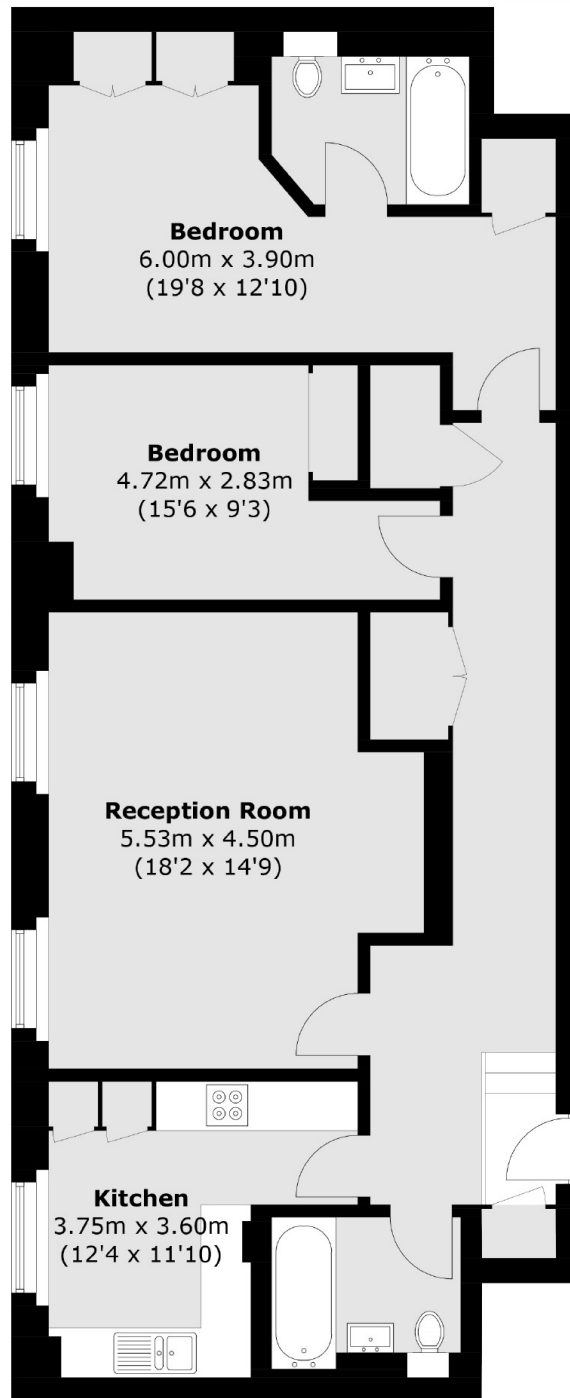
This sumptuously decorated apartment offers luxury and generous accommodation for a two bedroom flat. A large reception room and dining room, as well as a separate kitchen.

Mayfair is one of London's most prestigious and sought after areas defined by its historic buildings, elegant squares and gardens.





# Park Street, London, W1K



Total area (approx.): 98.8 sq. m (1063.4 sq. ft)

## Dexters

Mayfair  
102 Mount Street  
London  
W1K 2TH  
Lettings  
020 7529 5588

Energy Rating: C. We aim to make our particulars both accurate and reliable. However they are not guaranteed; nor do they form part of an offer or contract. If you require clarification on any points then please contact us, especially if you're traveling some distance to view. Please note that appliances and heating systems have not been tested and therefore no warranties can be given as to their good working order.

 **RICS** | Regulated  
Estate Agent  
and Letting Agent

[dexters.co.uk](https://www.dexters.co.uk)