



## Hays Mews, W1J

£3,750 Per week

Beautifully renovated six storey, three bedroom townhouse located within a prestigious mews close to Berkeley Square.

The internationally renowned dining and shopping facilities of Mount Street and the locale are within a short walking distance.

### Features

- Recently Renovated
- Six Storey House
- Secure Garage
- Three Double Bedrooms
- Four Bathrooms
- Passenger Lift





## Hays Mews, W1J

The principal bedroom spans the whole first floor with luxury bathroom including separate shower and his and hers sink, while the lower ground floor boasts a modern cinema room which doubles as further family space.

The house offers two further en suite bedrooms on the second floor, and a large dining area, kitchen and reception room on third and fourth floors.

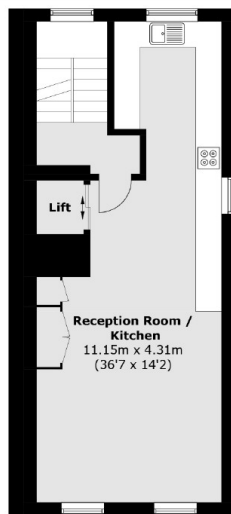
The 230 sq ft roof terrace is located above a substantial reception room which offers excellent entertaining space for guests and family. The house has an impressive five person lift servicing all six floors.

Hays Mews is located between Hill Street and Charles Street, close to Berkeley Square and the open spaces of both Hyde Park and Green Park.

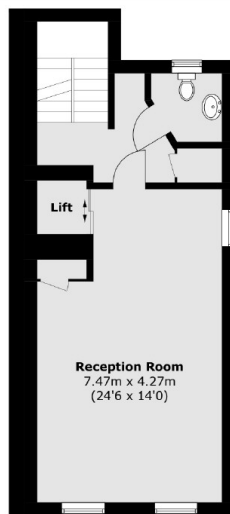




# Hays Mews, London, W1J



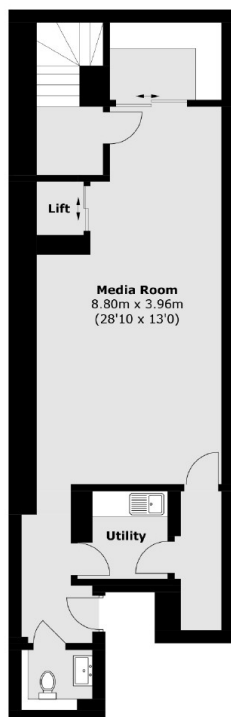
**Third Floor**



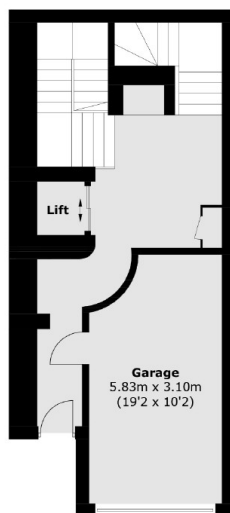
**Fourth Floor**



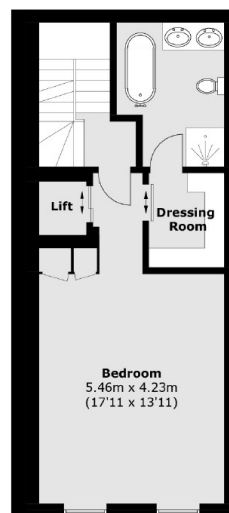
**Fifth Floor**



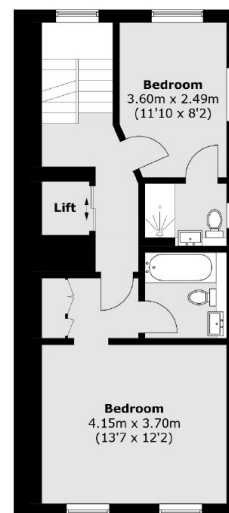
**Lower Ground Floor**



**Ground Floor**



**First Floor**



**Second Floor**

Total area (approx.): 302.4 sq. m (3,254.9 sq. ft)  
Terrace (approx.): 31.1 sq. m (334.8 sq. ft)