

Albemarle Street, W1S

£750 Per week

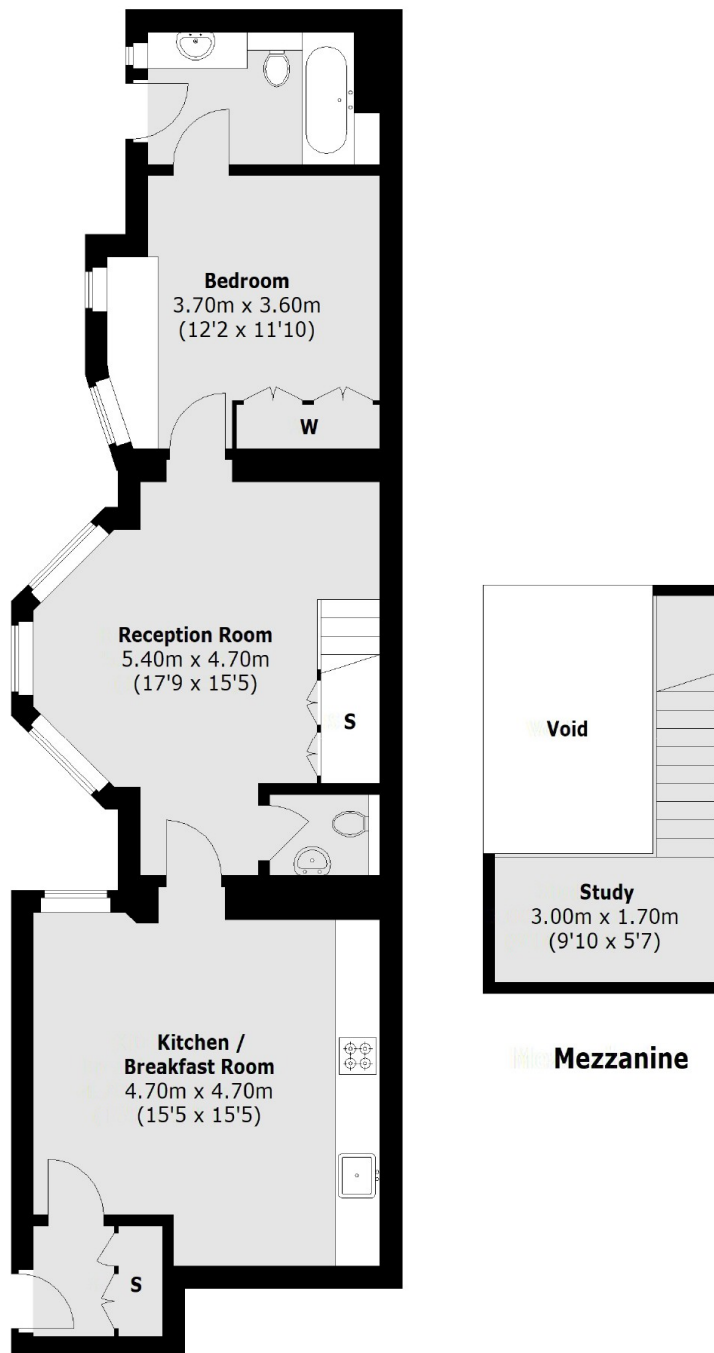
A spacious one bedroom flat located on the first floor of a well maintained Georgian building complete with a reception room with galleried study area, separate kitchen/breakfast room, bedroom with en suite bathroom and guest W/C.

Albemarle Street is ideally located for Green Park tube station on the Piccadilly, Victoria and Jubilee lines. Piccadilly Circus and the amenities and attractions of the West End are close by.

Features

- One Bedroom
- Wooden Flooring
- Modern Fixtures & Fittings
- Galleried Study Space
- Secure Entry Systems
- Excellent Location

Albemarle Street, London, W1S



First Floor

Total area (approx.): 73.0 sq. m (786 sq. ft)

Dexters

Mayfair
102 Mount Street
London
W1K 2TH
Lettings
020 7529 5588

Energy Rating: D. We aim to make our particulars both accurate and reliable. However they are not guaranteed; nor do they form part of an offer or contract. If you require clarification on any points then please contact us, especially if you're traveling some distance to view. Please note that appliances and heating systems have not been tested and therefore no warranties can be given as to their good working order.

RICS Regulated
Estate Agent
and Letting Agent

dexters.co.uk