

## Albemarle Street, W1S

£725 Per week

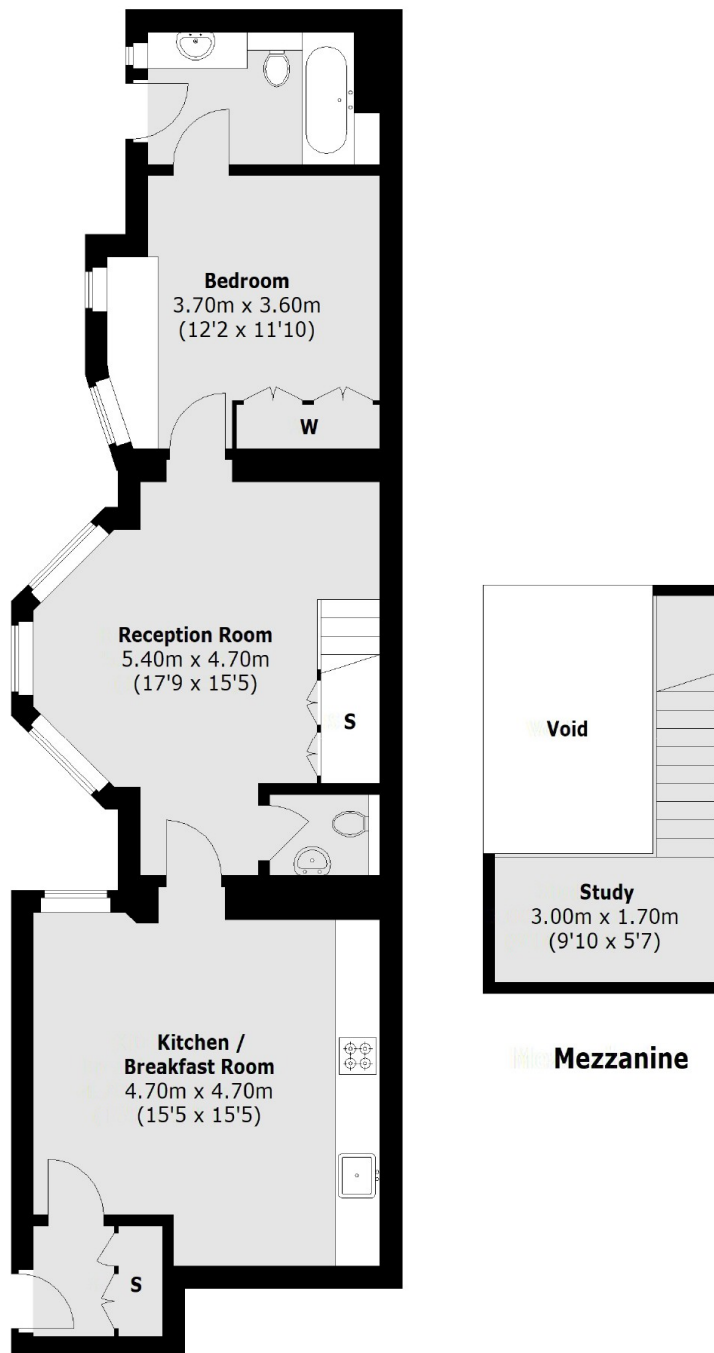
A spacious one bedroom flat located on the first floor of a well maintained Georgian building complete with a reception room with galleried study area, separate kitchen/breakfast room, bedroom with en suite bathroom and guest W/C.

Albemarle Street is ideally located for Green Park tube station on the Piccadilly, Victoria and Jubilee lines. Piccadilly Circus and the amenities and attractions of the West End are close by.

### Features

- One Bedroom
- Wooden Flooring
- Modern Fixtures & Fittings
- Galleried Study Space
- Secure Entry Systems
- Excellent Location

# Albemarle Street, London, W1S



**First Floor**

Total area (approx.): 73.0 sq. m (786 sq. ft)

## Dexters

Mayfair  
102 Mount Street  
London  
W1K 2TH  
Lettings  
020 7529 5588

Energy Rating: D. We aim to make our particulars both accurate and reliable. However they are not guaranteed; nor do they form part of an offer or contract. If you require clarification on any points then please contact us, especially if you're traveling some distance to view. Please note that appliances and heating systems have not been tested and therefore no warranties can be given as to their good working order.

**RICS** Regulated  
Estate Agent  
and Letting Agent

[dexters.co.uk](https://www.dexters.co.uk)