



Half Moon Street, W1J

£830 Per week

Beautifully presented one bedroom apartment of 624 sq ft located within a period building just a few minutes walk from Green Park.

Mayfair has an array of world-renowned restaurants, bars and shopping all with close walking distance to the home.

Features

- Spacious Double Bedroom
- Contemporary Finish
- Wooden Flooring
- High Ceilings
- Furnished
- Excellent Location



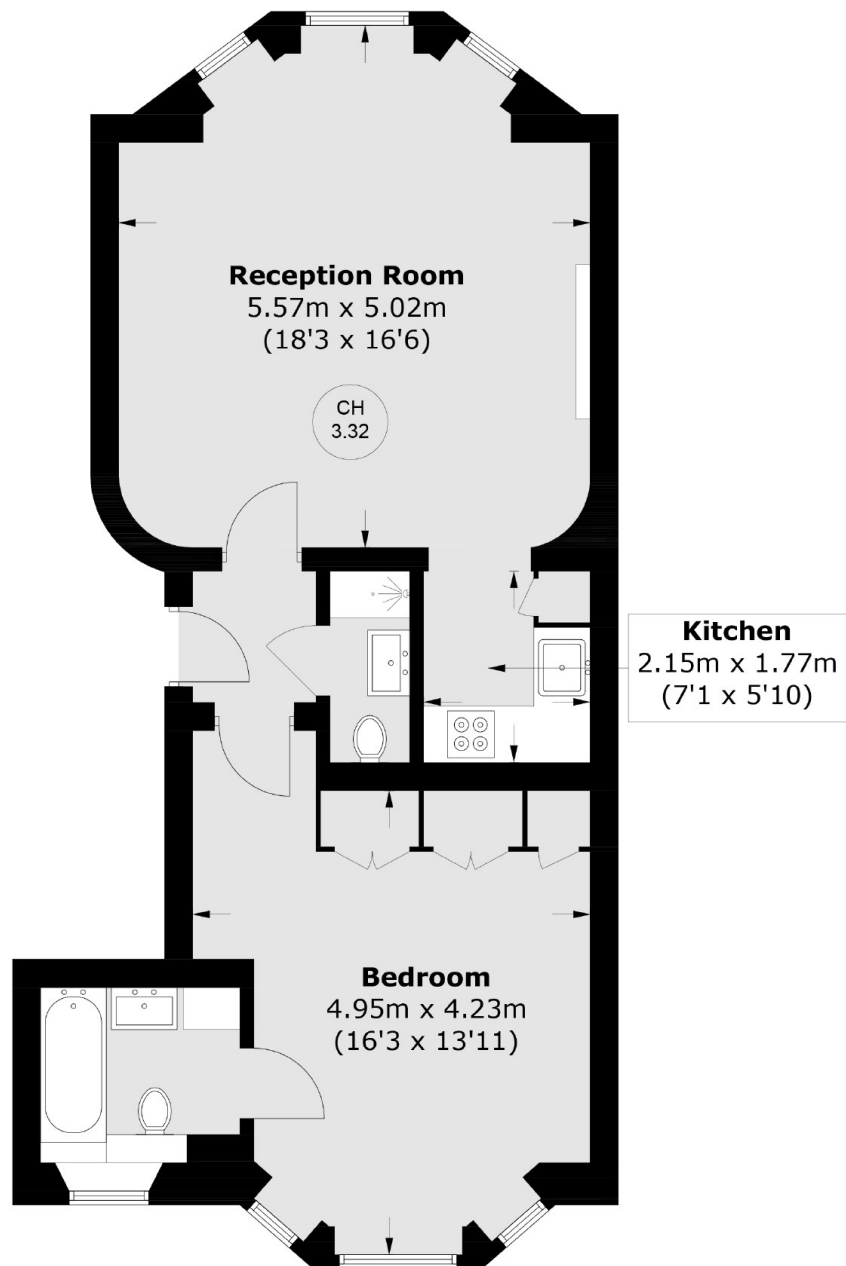
Half Moon Street, W1J

The apartment benefits from a spacious living room, modern kitchen, large bedroom & guest WC with high ceilings throughout.

Half Moon Street runs from Curzon Street to the north linking to Piccadilly and Green Park to the south, which offers residents expansive green open spaces along with Hyde Park within walking distance too.



Half Moon Street, London, W1J



Ground Floor

Total area (approx.): 58.2 sq. m (626.4 sq. ft)

Dexters

Mayfair
102 Mount Street
London
W1K 2TH
Lettings
020 7529 5588

Energy Rating: C. We aim to make our particulars both accurate and reliable. However they are not guaranteed; nor do they form part of an offer or contract. If you require clarification on any points then please contact us, especially if you're traveling some distance to view. Please note that appliances and heating systems have not been tested and therefore no warranties can be given as to their good working order.

 **RICS** | Regulated
Estate Agent
and Letting Agent

[dexters.co.uk](https://www.dexters.co.uk)