



## Mount Street, W1K

£1,450 Per week

A luxury top floor (with lift) one bedroom apartment with spectacular views across Berkeley Square. Located on the corner of Mount Street.

### Features

- One Double Bedroom
- Additional Study / Snug Room
- Two Bathrooms
- Fourth Floor
- Lift Access
- Excellent Location



## Mount Street, W1K

Located on the fourth floor, the apartment comprises of a large reception room with period features and has a feature turret above the reception room that has been designed for use as a snug and is accessed via a modern open staircase.

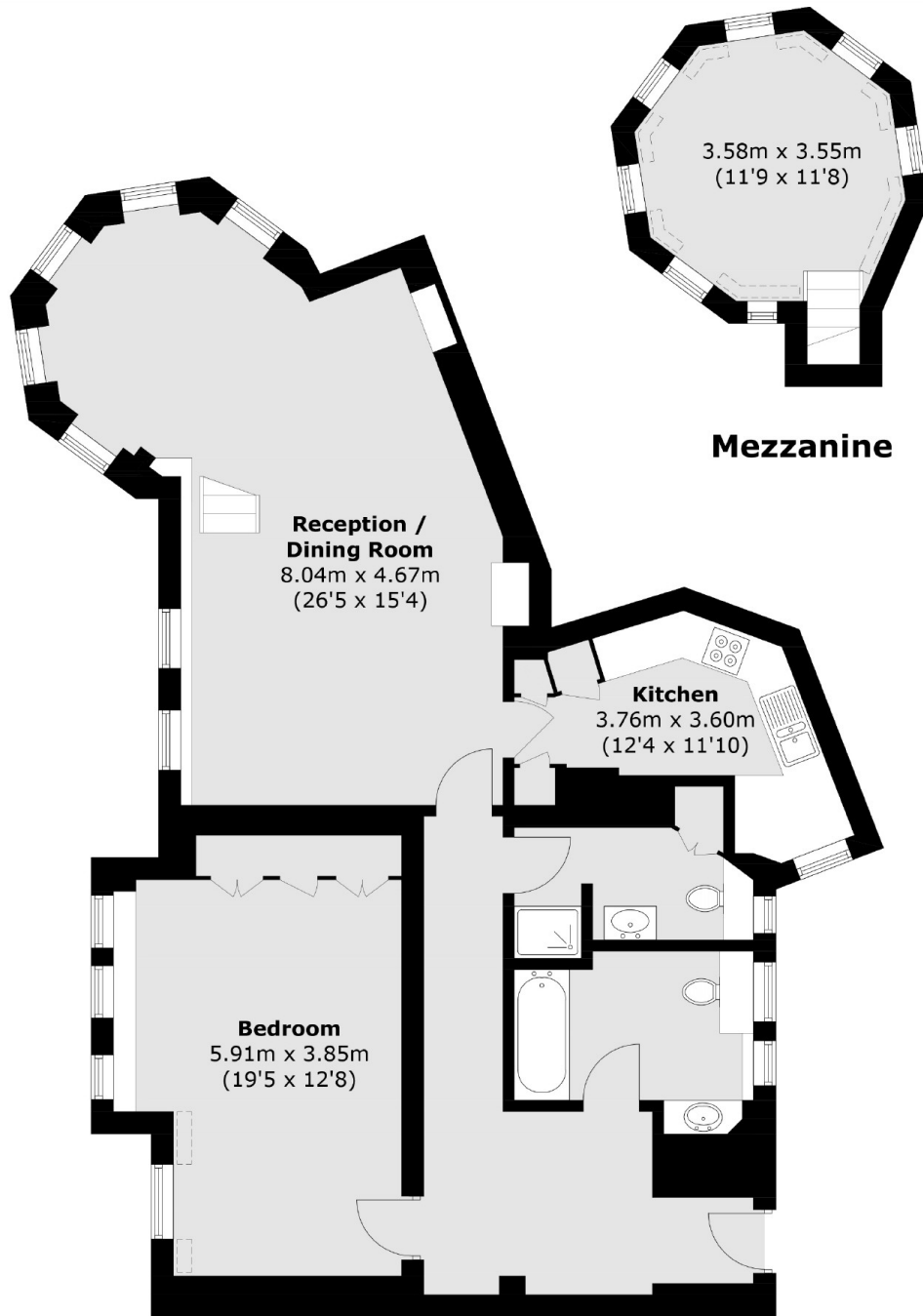
There is a separate integrated kitchen, spacious double bedroom with fitted storage, modern bathroom and separate second shower room.

Mayfair's most highly regarded residential street, Mount Street is close to the Connaught Hotel, Mount Street Gardens and the bustling Berkeley Square.





# Mount Street, London, W1K



**Mezzanine**

## **Fourth Floor**

Total area (approx.): 108.6 sq. m (1,168.9 sq. ft)  
(Including Mezzanine)

# Dexters

Mayfair  
102 Mount Street  
London  
W1K 2TH  
Lettings  
020 7529 5588

Energy Rating: E. We aim to make our particulars both accurate and reliable. However they are not guaranteed; nor do they form part of an offer or contract. If you require clarification on any points then please contact us, especially if you're traveling some distance to view. Please note that appliances and heating systems have not been tested and therefore no warranties can be given as to their good working order.

 **RICS** | Regulated  
Estate Agent  
and Letting Agent

[dexters.co.uk](https://www.dexters.co.uk)