



## Park Street, W1K

£1,150 Per week

A two bedroom period property in central Mayfair with a large reception room, a double bedroom with an en suite and single bedroom.

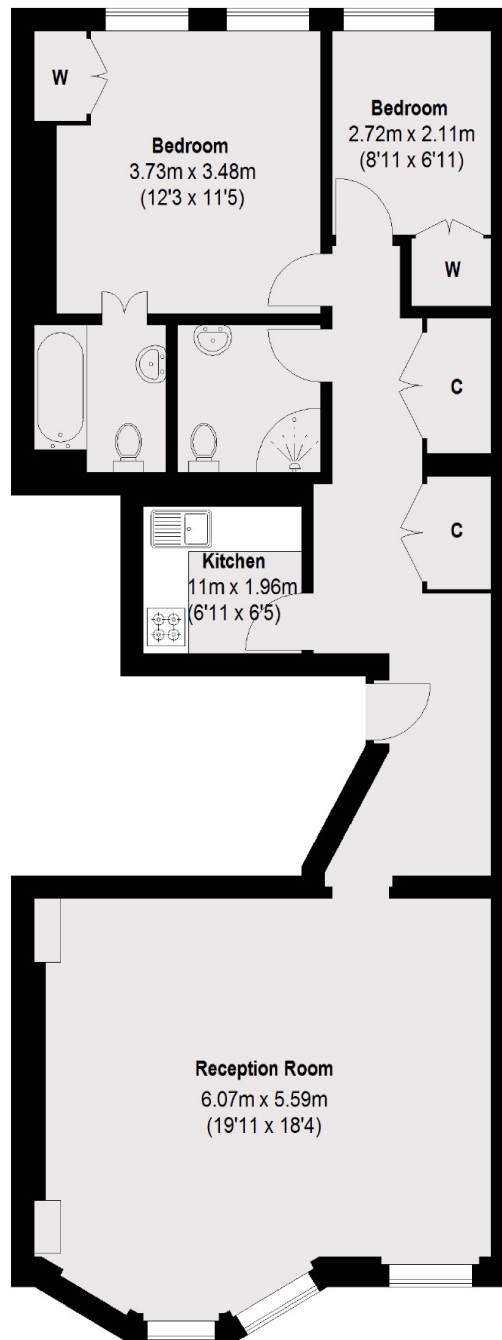
This bright apartment comprises of a large reception/dining room with a feature fireplace and wooden floors, a modern kitchen, a large double bedroom with an en-suite bathroom, a single bedroom/study and a further modern shower room. This property benefits from an abundance of storage.

The apartment is conveniently located close to Oxford Street, Hyde Park, Marble Arch and Bond Street tube stations.

### Features

- Spacious Double Bedroom
- Single Bedroom/Study
- Modern Separate Kitchen
- Reception/Dining Room
- Two Bathrooms
- High Ceilings

# Park Street, London, W1K



## Second Floor

Total area (approx.): 83.61 sq. m (900 sq. ft)

# Dexters

Mayfair  
102 Mount Street  
London  
W1K 2TH  
Lettings  
020 7529 5588

Energy Rating: C. We aim to make our particulars both accurate and reliable. However they are not guaranteed; nor do they form part of an offer or contract. If you require clarification on any points then please contact us, especially if you're traveling some distance to view. Please note that appliances and heating systems have not been tested and therefore no warranties can be given as to their good working order.

 **RICS** | Regulated  
Estate Agent  
and Letting Agent

[dexters.co.uk](https://www.dexters.co.uk)