



Rose & Crown Yard, SW1Y

£850,000

A one-bedroom apartment in the heart of St. James's.

Rose and Crown Yard is a quiet mews perfectly located moments from St James's Square, St James's Park, Green Park and the seemingly endless boutiques, shops, restaurants and bars of Jermyn Street, Piccadilly & Mayfair.

Features

- One Bedroom
- One Bathroom
- Juliet Balcony
- Separate Store Room
- Long Lease

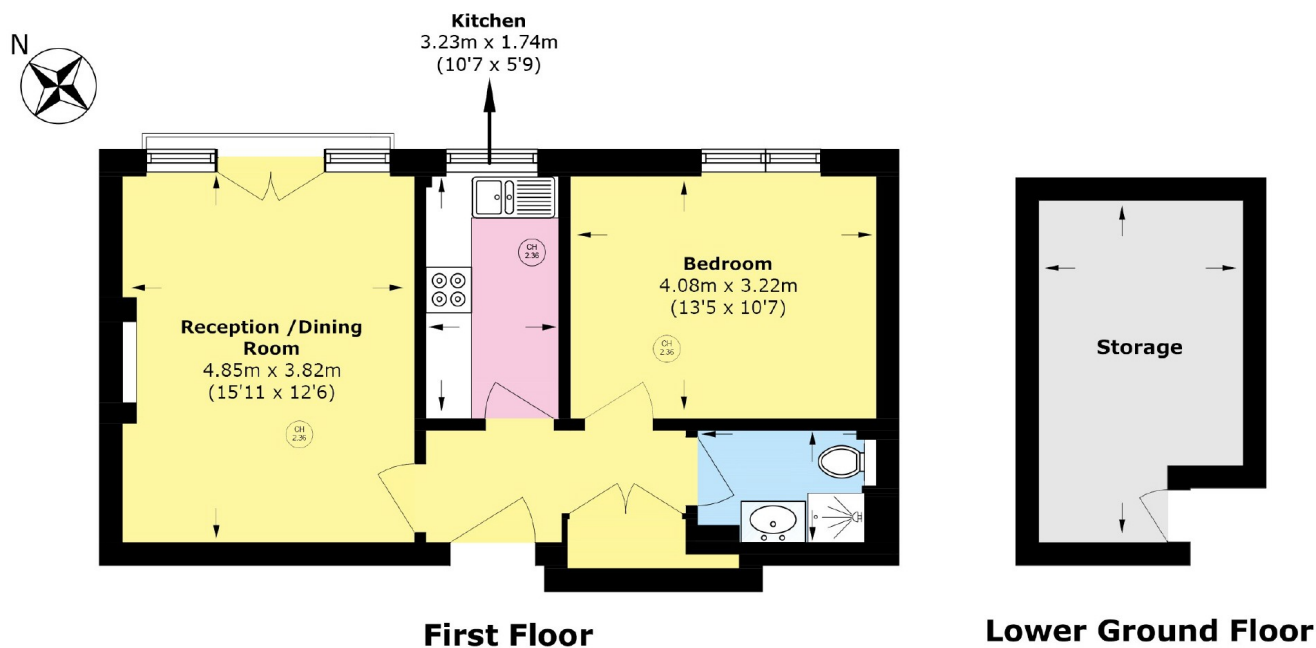


Rose & Crown Yard, SW1Y

This one-bedroom apartment is located on the first floor of this modern purpose-built block with a lift, in the centre of historic St James's. Measuring 522 square feet plus a large storage room of 117 square feet, there is plenty of space in the apartment for, a spacious reception room including space for a dining table, a separate kitchen and a good-sized double bedroom with plenty of wardrobe space. The property is well presented throughout and conveniently located just off King Street.



Rose & Crown Yard, London, SW1Y



Total area (approx.): 48.5 sq. m (522.0 sq. ft)
Storage area (approx.): 10.9 sq. m (117.3 sq. ft)