



Hertford Street, W1J

£925 Per week

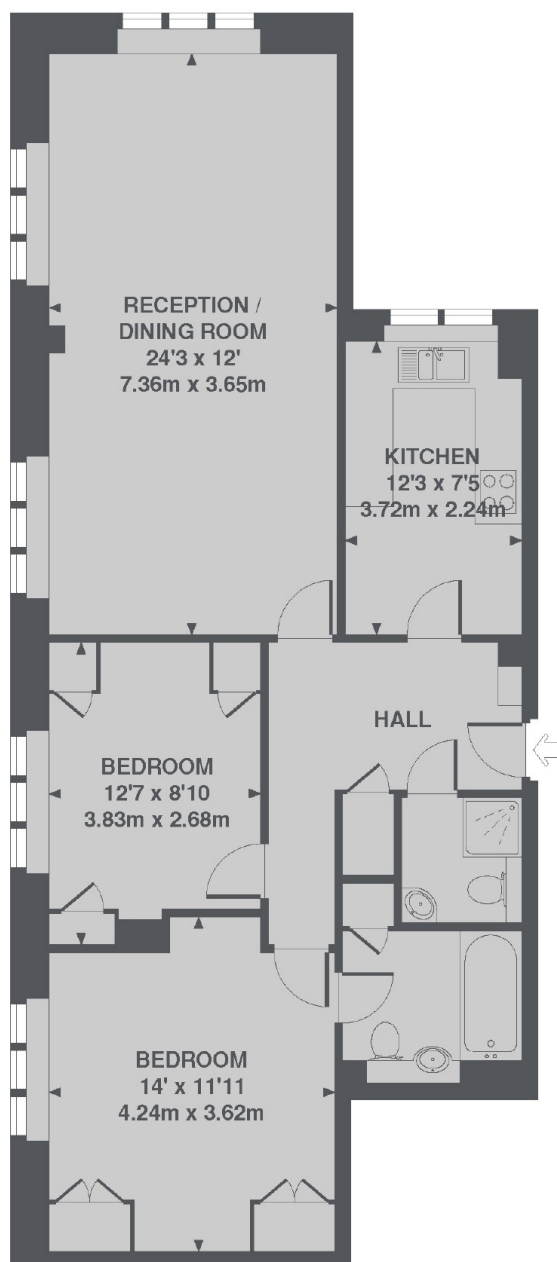
A two bedroom apartment on the fifth floor of this popular art-deco building with porter and lift. With two similar sized double bedrooms, this apartment is suitable for a couple looking for a spare bedroom or two sharing professionals.

Within the vibrant area of Shepherd's Market this building is to the east side of Hertford Street.

Features

- Two Double Bedrooms
- Two Bathrooms
- Separate Kitchen
- Lift Access
- Porter
- Excellent Location

Hertford Street, London, W1J



5TH FLOOR

TOTAL APPROX. FLOOR AREA 833 SQ. FT. (77.4 SQ. M.)