



Farm Street, W1J

£1,153 Per week

This well presented lower ground floor, two bedroom two bathroom apartment is ideally located in the heart of Mayfair Village.

Farm Street is perfectly located in the heart of Mayfair Village, close to the exclusive restaurants, boutiques and galleries of Bond Street.

Features

- Two Double Bedrooms
- Two Bathrooms
- Wooden Flooring
- Fully Furnished
- Private Courtyard
- Excellent Location



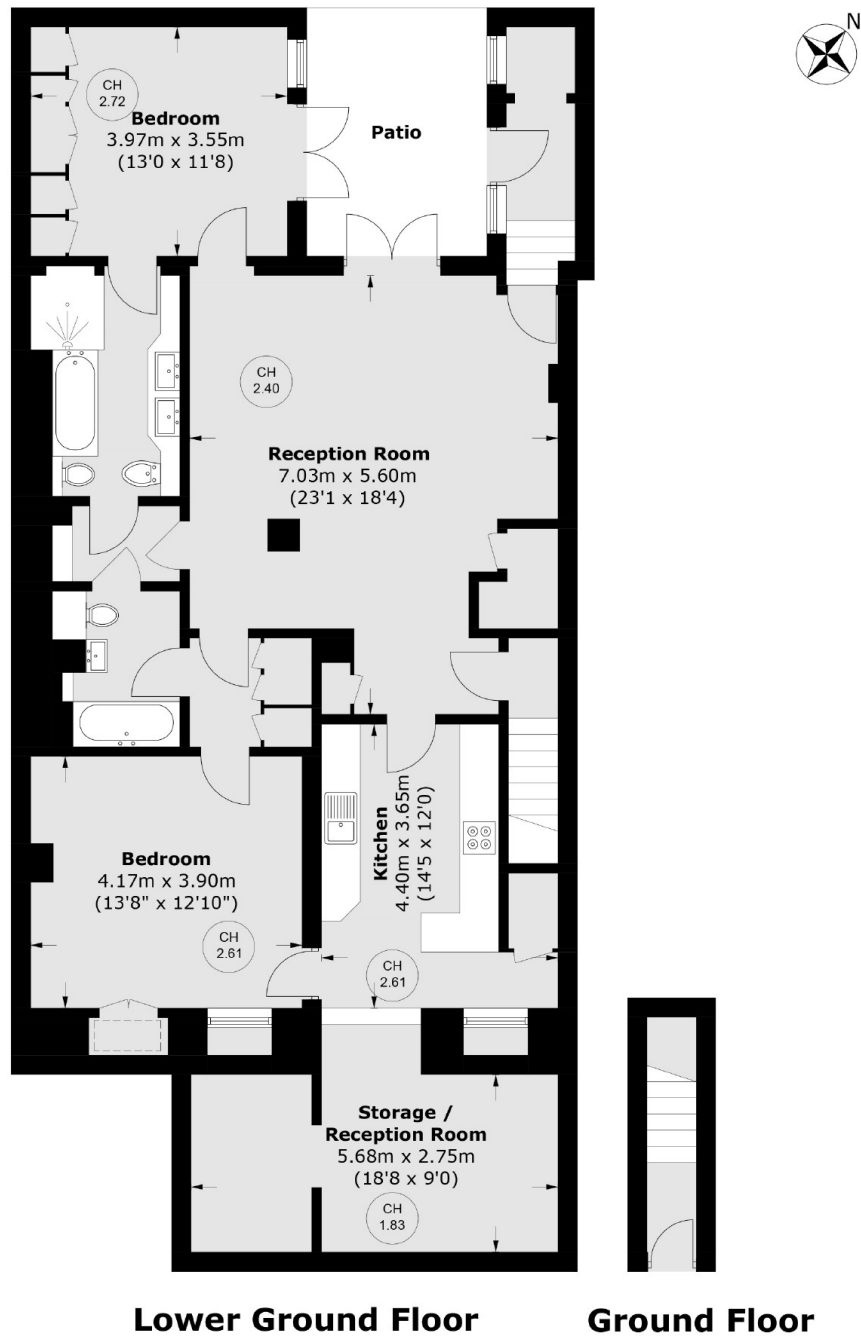
Farm Street, W1J

The property includes two spacious double bedrooms both of which benefit from an en-suite bathroom. The living room includes space for dining and entertaining as well as charming French doors leading out onto a lovely courtyard.

The kitchen is fully integrated and has an adjoining snug room perfect for breakfast or relaxing, as well as a vaulted storage area.



Farm Street, London, W1J



Total area (approx.): 137.8 sq. m (1,483.2 sq. ft)

Dexters

Mayfair
102 Mount Street
London
W1K 2TH
Lettings
020 7529 5588

Energy Rating: C. We aim to make our particulars both accurate and reliable. However they are not guaranteed; nor do they form part of an offer or contract. If you require clarification on any points then please contact us, especially if you're traveling some distance to view. Please note that appliances and heating systems have not been tested and therefore no warranties can be given as to their good working order.

 **RICS** | Regulated
Estate Agent
and Letting Agent

[dexters.co.uk](https://www.dexters.co.uk)