



Arlington Street, SW1A

£10,000 Per week

Stunning triplex penthouse apartment with private roof terrace situated in the desirable Walpole Mayfair, once occupied by Prime Minister Sir Robert Walpole.

The property is located at the Northern end of Arlington Street just opposite the Ritz Hotel, with Buckingham Palace and Green Park a short walk away.

Features

- Three Double Bedrooms
- Three En Suite Bathrooms
- High Standard Finish
- Large Private Terrace
- Direct Lift Access
- 24 Hour Porter



Arlington Street, SW1A

The Walpole is a prestigious development of two period townhouses adjacent to the Ritz and was once occupied by Sir Robert Walpole who is considered the first prime minister and served his term in power between 1721-1742.

The building benefits from a 24-hour concierge and lift access. Located on Arlington Street which has been home to princes, Prime Ministers, and impresarios ever since King Charles II gifted the plot to Henry Bennett, 1st Earl of Arlington.

The apartment provides lift access directly to both the fifth and sixth floors. The three bedrooms are located on the fifth floor and has a large entrance hall which has been finished with marble flooring and showcases the impressive bespoke staircase which wraps around a double height Swarovski Crystal chandelier.

On the sixth floor, there is a 47' wide reception room, comprising the open-plan kitchen, reception room and dining area which also leads out on to private breakfast terrace.

The reception room has floor to ceiling windows allowing an abundance of natural light and is finished with marble floor throughout.

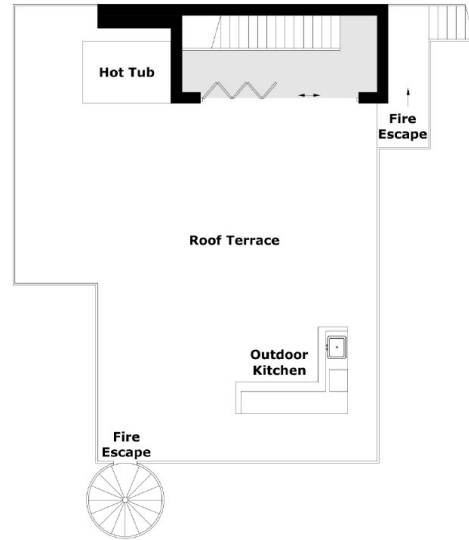
The open-plan kitchen was designed and finished by Boffi with Gaggenau appliances including full height wine cooler, integrated coffee machine and a Quooker tap. There is also a separate WC.

The principal suite has bespoke joinery with walk-in dressing room and large en suite bathroom benefitting from a walk-in shower and single-piece freestanding bath. Both the second and third bedrooms have bespoke built-in wardrobes and en suite bathrooms.

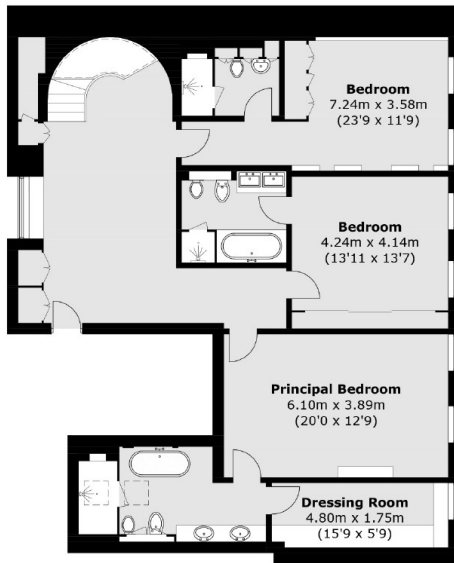
The overall showpiece of the property is its 32' private roof terrace occupying the seventh floor in its entirety and providing unrivalled views over London's iconic skyline. The terrace has a hot tub, both formal and casual seating and a large catering island with integrated sink and BBQ.



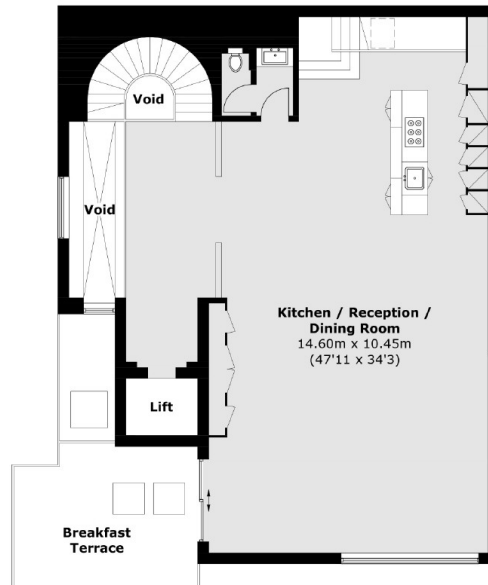
Arlington Street, London, SW1A



Seventh Floor



Fifth Floor



Sixth Floor

Total area (approx.): 285.5 sq. m (3,073.1 sq. ft)
(Excluding Lift)
Terrace area (approx.): 127.9 sq. m (1,376.7 sq. ft)

Dexters

Mayfair
102 Mount Street
London
W1K 2TH
Lettings
020 7529 5588

Energy Rating: C. We aim to make our particulars both accurate and reliable. However they are not guaranteed; nor do they form part of an offer or contract. If you require clarification on any points then please contact us, especially if you're traveling some distance to view. Please note that appliances and heating systems have not been tested and therefore no warranties can be given as to their good working order.

 **RICS** | Regulated
Estate Agent
and Letting Agent

[dexters.co.uk](https://www.dexters.co.uk)