



Park Street, W1K

£1,250 Per week

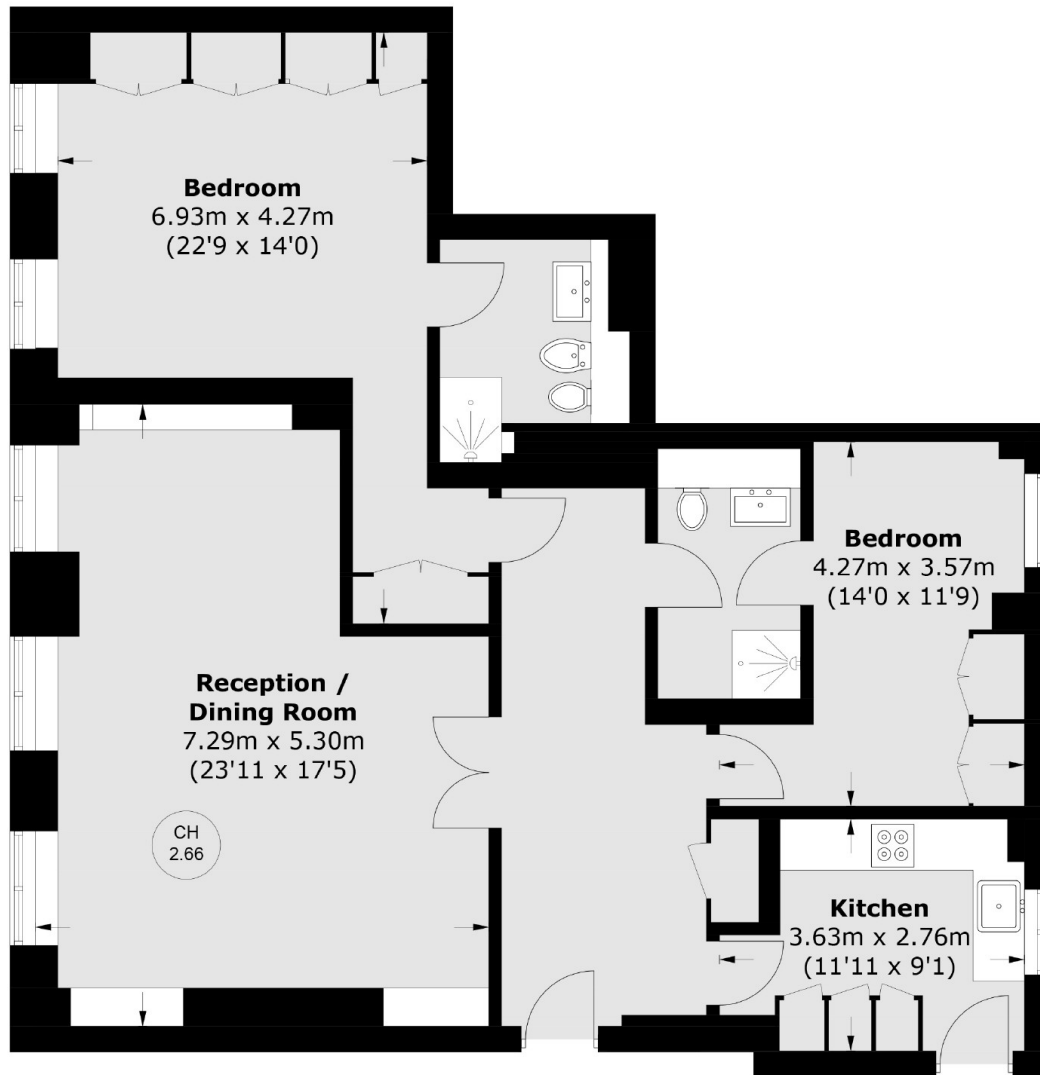
Within one of Mayfair's premier portered buildings, a two bedroom, two bathroom lateral apartment on the fourth floor with views over Park Street.

Fountain House is located in the heart of Mayfair village, close to Hyde Park and the boutiques and restaurants on Mount Street.

Features

- Two Double Bedrooms
- Two Bathrooms
- Lift
- 24hr Porter
- Wooden Floors
- Unfurnished

Park Street, London, W1K



Fourth Floor

Total area (approx.): 107.7 sq. m (1,159.3 sq. ft)

Dexters

Mayfair
102 Mount Street
London
W1K 2TH
Lettings
020 7529 5588

Energy Rating: C. We aim to make our particulars both accurate and reliable. However they are not guaranteed; nor do they form part of an offer or contract. If you require clarification on any points then please contact us, especially if you're traveling some distance to view. Please note that appliances and heating systems have not been tested and therefore no warranties can be given as to their good working order.

 **RICS** | Regulated
Estate Agent
and Letting Agent

dexters.co.uk