



Grosvenor Square, W1K

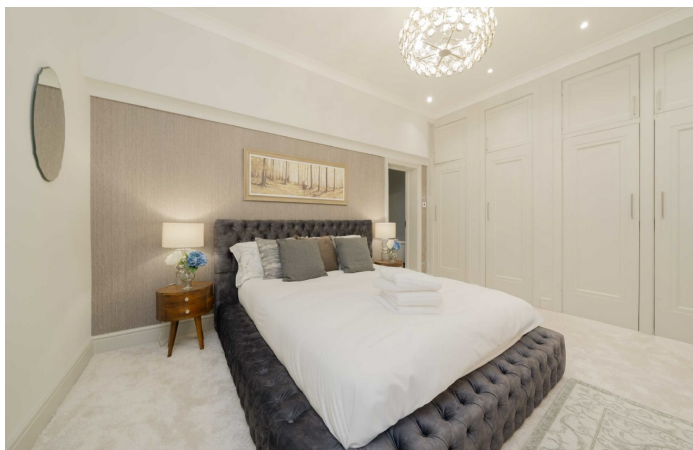
£1,730 Per week

This brand newly renovated two bedroom, two bathroom apartment is located in one of Mayfair's most prestigious, 24 hour portered apartment blocks.

There is an abundance of designer retailers along Mount Street as well as numerous restaurants, and the famous Connaught Hotel. The green open spaces of Hyde Park are just a short stroll away.

Features

- Two Double Bedrooms
- Two Bathrooms
- 24 Hour Porter / Security
- Wooden Flooring
- Brand New Renovation
- World Renowned Location



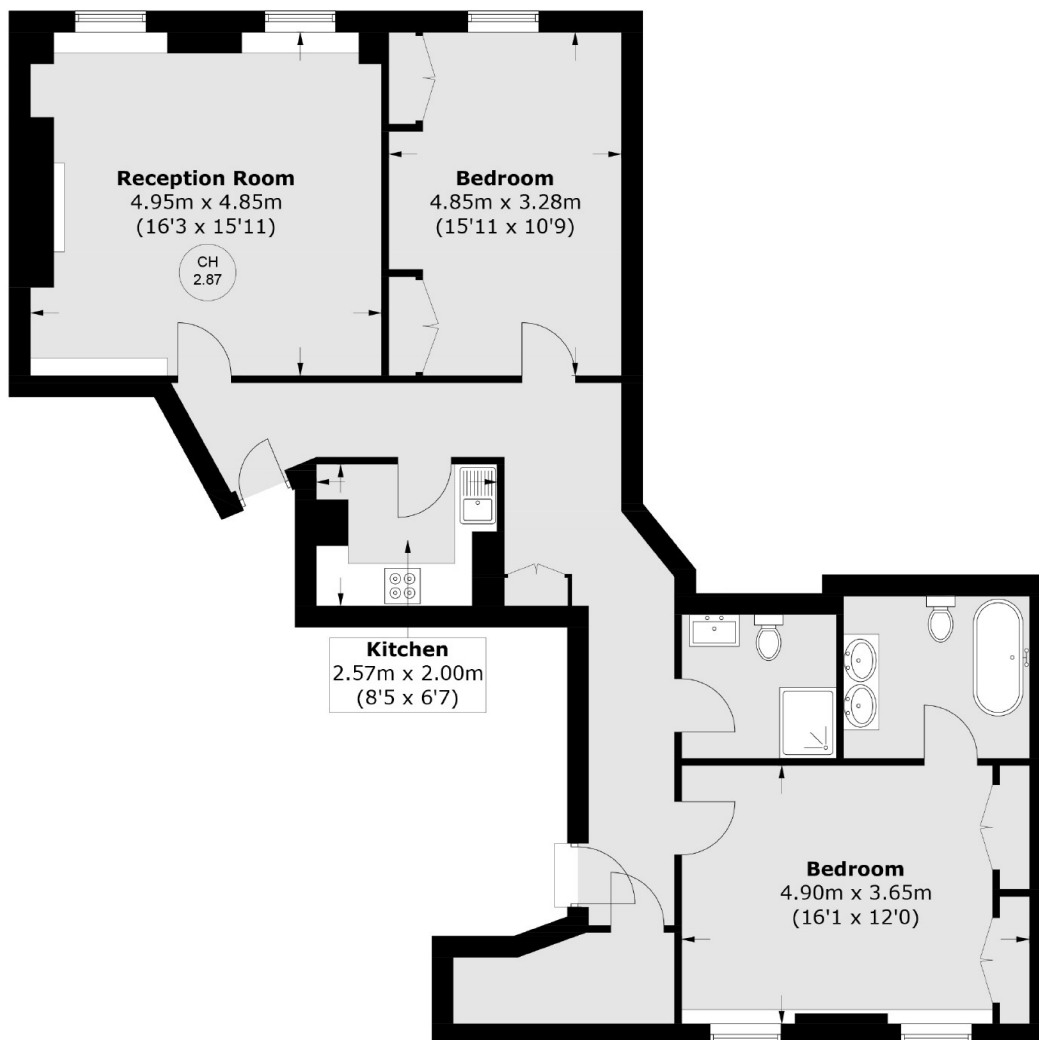
Grosvenor Square, W1K

Consisting of a spacious bright reception/dining room which has been designed to a high specification, separate fully fitted kitchen with new appliances, principal bedroom with built-in wardrobes, en suite bathroom alongside further second double bedroom with fitted storage and family bathroom.

Grosvenor Square is one of the most prestigious addresses in London, located in the heart of Mayfair just moments from well renowned restaurants such as Scott's and exclusive private members clubs such as Annabel's.



Grosvenor Square, London, W1K



Total area (approx.): 96.2 sq. m (1,035.2 sq. ft)

Dexters

Mayfair
102 Mount Street
London
W1K 2TH
Lettings
020 7529 5588

Energy Rating: C. We aim to make our particulars both accurate and reliable. However they are not guaranteed; nor do they form part of an offer or contract. If you require clarification on any points then please contact us, especially if you're traveling some distance to view. Please note that appliances and heating systems have not been tested and therefore no warranties can be given as to their good working order.

 **RICS** | Regulated
Estate Agent
and Letting Agent

[dexters.co.uk](https://www.dexters.co.uk)