



## Hertford Street, W1J

£1,100 Per week

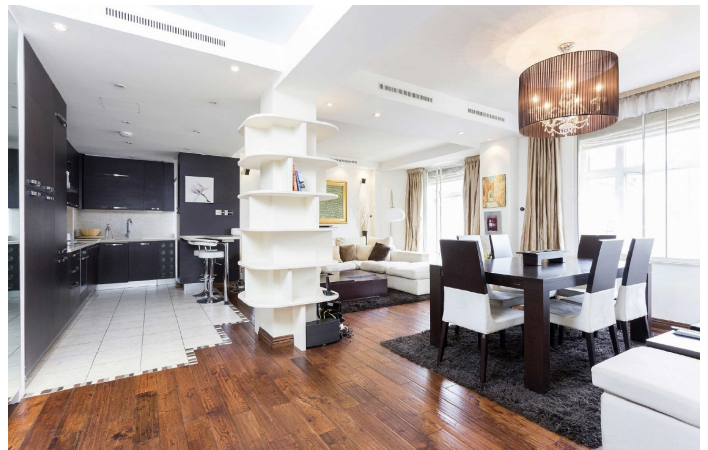
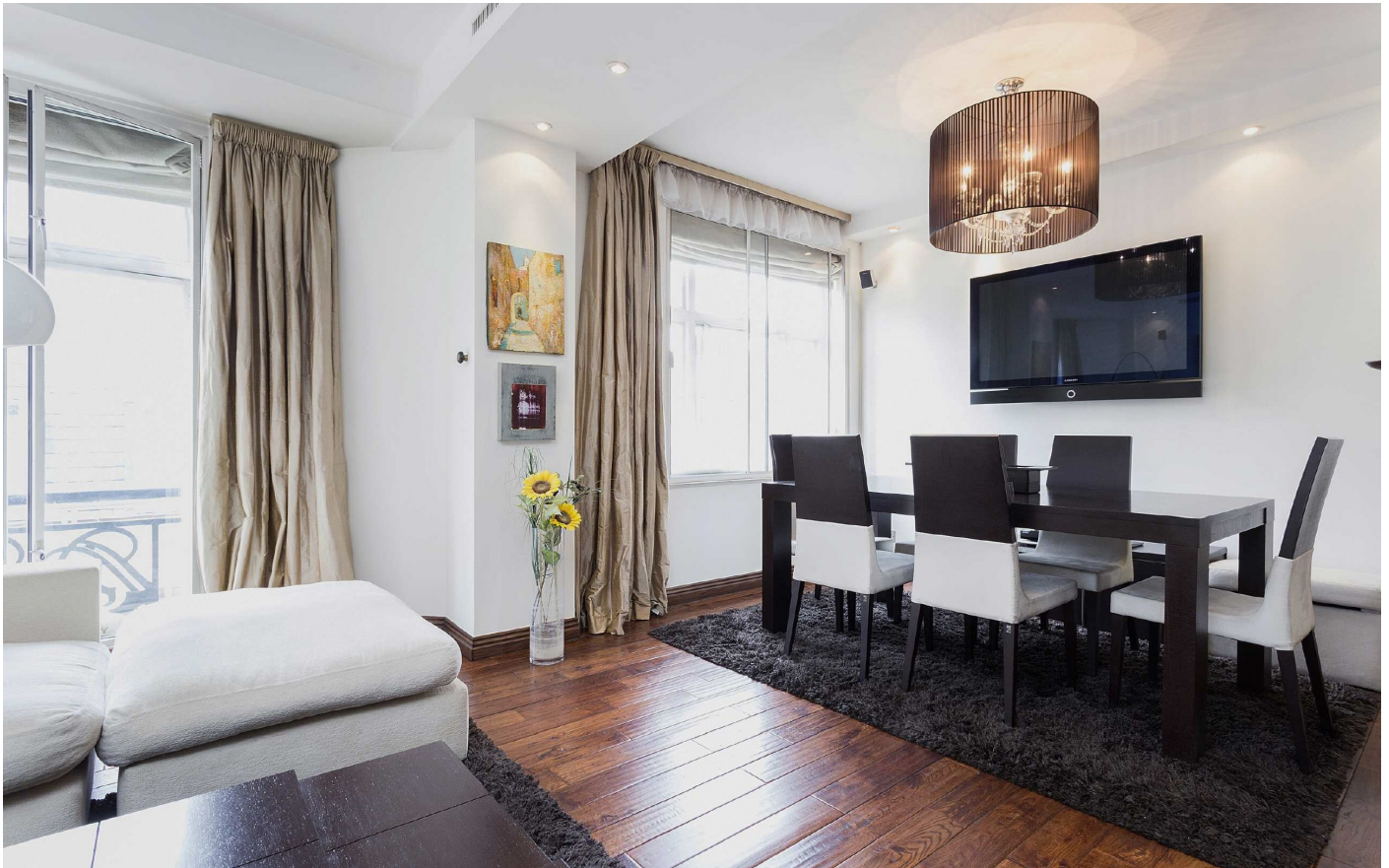
A two bedroom third floor apartment with a lift in a portered building.

Within the vibrant area of Shepherds Market this building is to the East side of Hertford Street, under half a mile to Green Park underground station and next to the open spaces of Hyde Park and Green Park.

### Features

- Two Double Bedrooms
- Two Modern Bathrooms
- 24hr Porter
- Lift Access
- Wooden Flooring
- Contemporary Style





## Hertford Street, W1J

A two bedroom third floor apartment with a lift in a portered building with open plan reception/ dining room, main bedroom with en suite bathroom and dressing room, further double bedroom and separate shower room.





# Hertford Street, London, W1J

