



Lancashire Court, W1S

£1,700 Per week

A impeccably presented, two bedroom maisonette, featuring a large open plan living space and terrace within a beautifully converted period property. Located between Brook Street and prestigious New Bond Street.

Lancashire Court is situated on a quiet pedestrianised street just off Brook Street. The property is close to both Oxford Street and the open spaces of Grosvenor Square and is well located for a number of nearby cafes, restaurants and shops.

Features

- Two Bedrooms
- Two En-Suite Bathrooms
- Terrace
- Wooden Flooring
- Air Conditioning
- Excellent Location



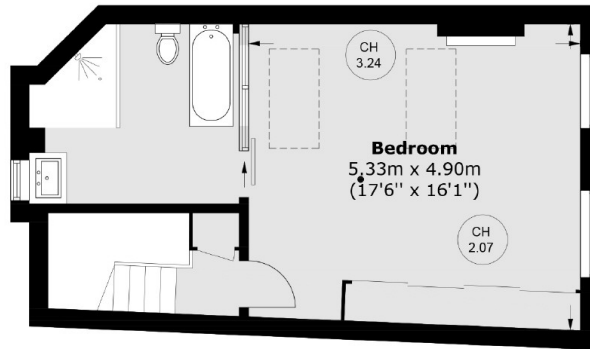
Lancashire Court, W1S

The residence boasts a spacious reception area, contemporary kitchen and a bright sun room dining area with south west facing views leading to a decked roof terrace.

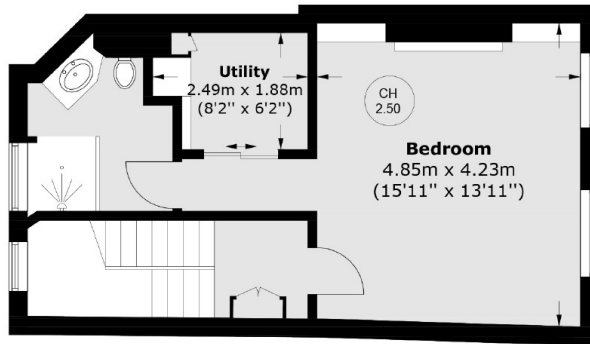
The property comprises of two generously sized double bedrooms, each with its own modern bathroom.



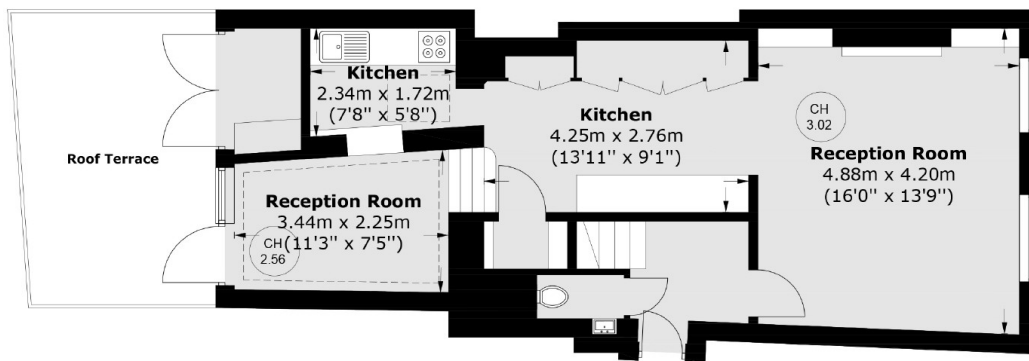
Lancashire Court, London, W1S



Third Floor



Second Floor



First Floor

Total area (approx.): 139.4 sq. m (1,500.5 sq. ft)
Roof Terrace : 14.7 sq. m (158.2 sq. ft)