



Park Street, W1K

£1,400 Per week

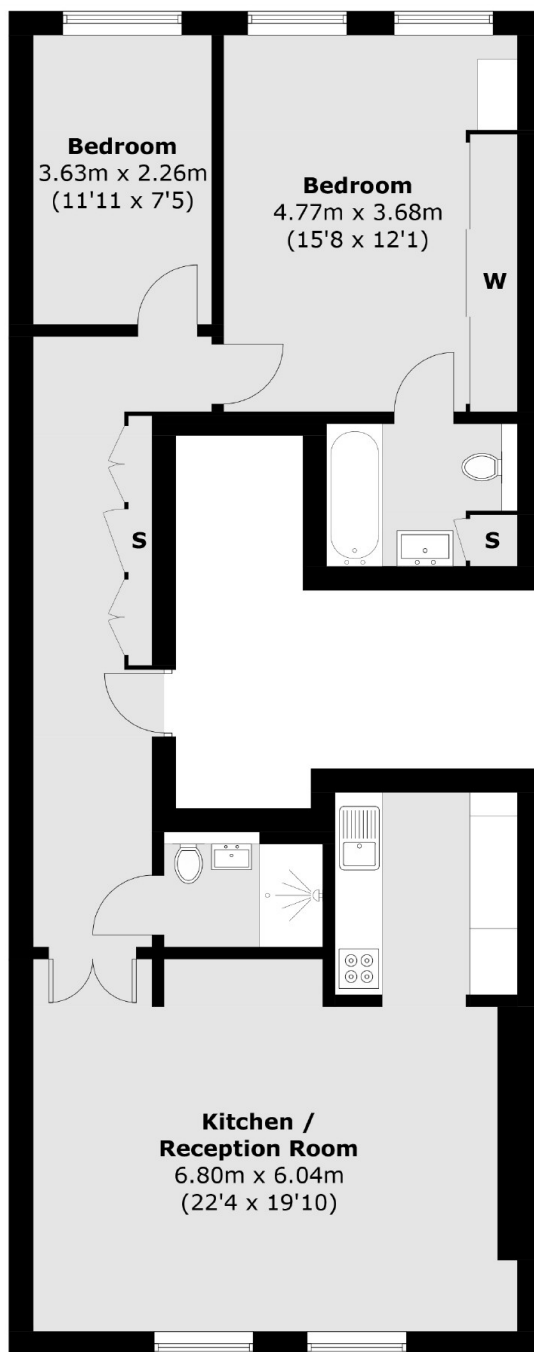
A newly renovated two bedroom apartment on the fourth floor of a red brick, period conversion in a highly sought after Mayfair location.

Set close to Oxford Street and Marble Arch station, this property is conveniently located within easy reach of the shops and restaurants of Mayfair.

Features

- Two Double Bedrooms
- Two Modern Bathrooms
- Brand New Renovation
- Furnished
- CCTV and Secure Entry Systems
- Wooden Flooring

Park Street, London, W1K



Fourth Floor

Total area (approx.): 81.3 sq. m (875.1 sq. ft)