



Upper Grosvenor Street, W1K

£2,200 Per week

A newly renovated two double bedroom, two bathroom apartment on the third floor of an exclusive 24-hour portered building.

Grosvenor Square is a prestigious garden square located to the east of Hyde Park and to the north of Piccadilly. The property is within reach of the many amenities offered by Mount Street and their surrounding areas.

Features

- New Renovation
- Two Double Bedrooms
- Two Bathrooms
- 24-Hour Porter
- Wooden Flooring
- Lift Access



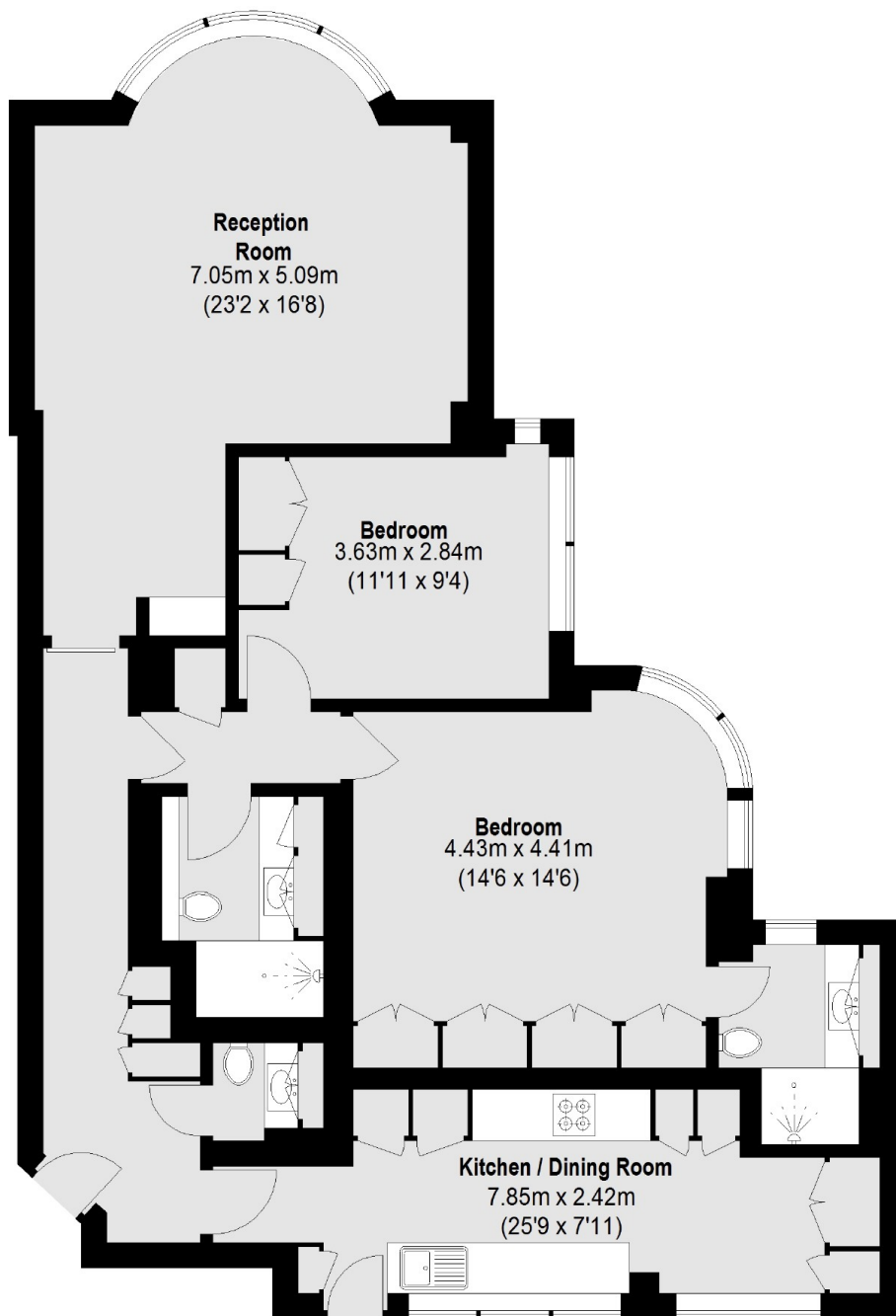
Upper Grosvenor Street, W1K

Set on the third floor with a lift, the apartment has been finished to a very high standard with wood flooring throughout and comfort cooling in all rooms.

The apartment consists of a bright reception room with space for dining and entertaining, modern fully integrated kitchen, two bedrooms and two luxury bathrooms.



Upper Grosvenor Street, London, W1K



Fourth Floor

Total area (approx.): 100.61 sq. m (1083 Sq. ft)