

## Berkeley Street, W1J

£1,200 Per week

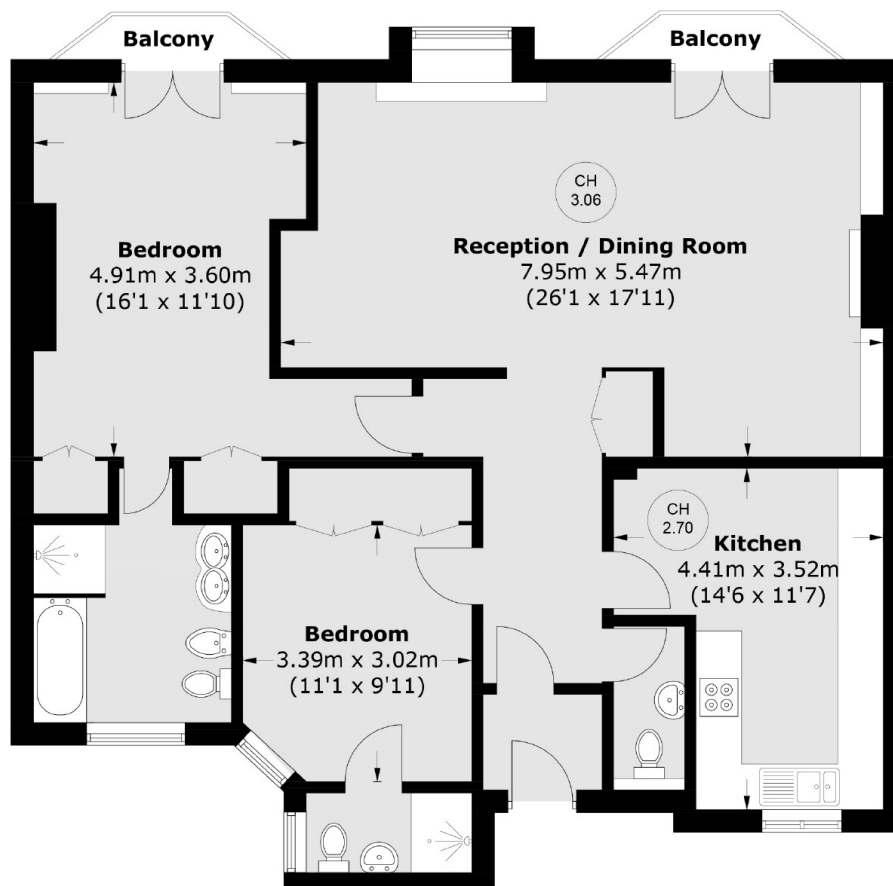
A two bedroom, two bathroom apartment in a period block with a lift and day porter. The apartment is well proportioned and has been recently redecorated.

Conveniently located close to Berkeley Square, Green Park tube station and a large number of world class restaurants and shopping.

### Features

- Two Double Bedrooms
- Two Bathrooms
- Newly Decorated
- Balcony
- Separate Kitchen
- Lift Access

# Berkeley Street, London, W1J



Total area (approx.): 105.5 sq. m (1,135.6 sq. ft)  
Balcony (approx.): 2.7 sq. m (29.0 sq. ft)