



Hay Hill, W1J

£675 Per week

An ideal one bedroom pied-a-terre, located on the fifth floor and just steps away from Berkeley Square. This spacious and bright property has the added benefit of lift access and portorage.

Located near the amenities of Piccadilly, it is also within easy reach of Mayfair's world renowned shops and restaurants.

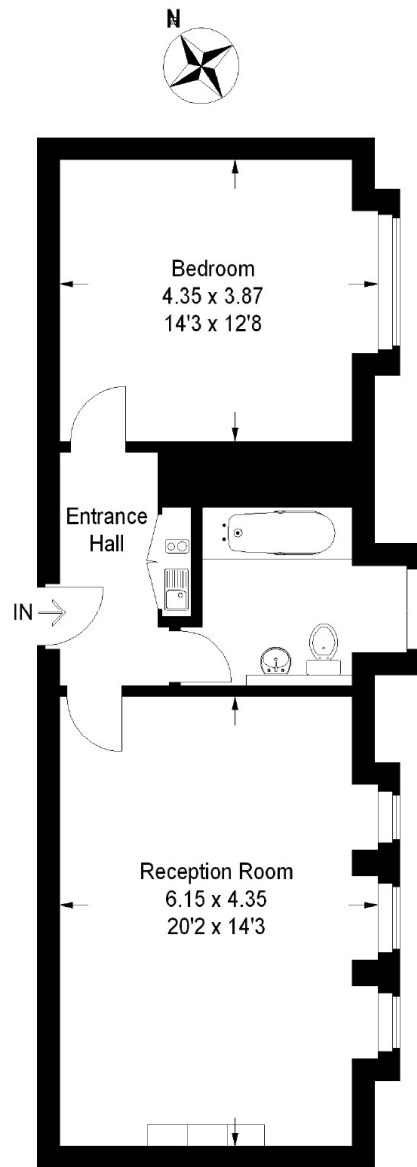
Features

- South Facing Reception Room
- Large Double Bedroom
- Separate Kitchen
- Lift Access
- Porter
- Excellent Location

Hay Hill, London, W1J

Hay Hill, W1J

Approximate Gross Internal Area = 57 sq m / 613 sq ft



Fifth Floor

Illustration for identification purposes only, measurements are approximate, not to scale.
FloorplansUsketch.com © 2014 (ID91826)