



North Row, W1K

£3,950 Per week

This stunning newly refurbished two bedroom, two bathroom apartment is set over the fifth to seventh floors and benefits from a 24 hour concierge and three private terraces that boast views over the London skyline and Hyde Park.

Park Lane Place offers luxury accommodation in the heart of Mayfair moments from the exclusive boutiques, shops, restaurants and bars of Piccadilly, Oxford Street and Bond Street. Hyde Park is just over the road.

Features

- Two Large Double Bedrooms
- Two Luxury Bathrooms
- Three Terraces
- Contemporary Furniture
- Air Conditioning
- Penthouse Apartment



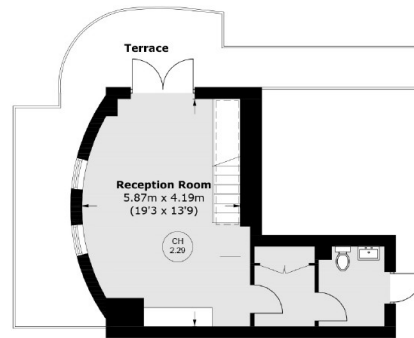
North Row, W1K

The apartment has been meticulously renovated and interior designed throughout with contemporary fixtures, fittings and furnishings.

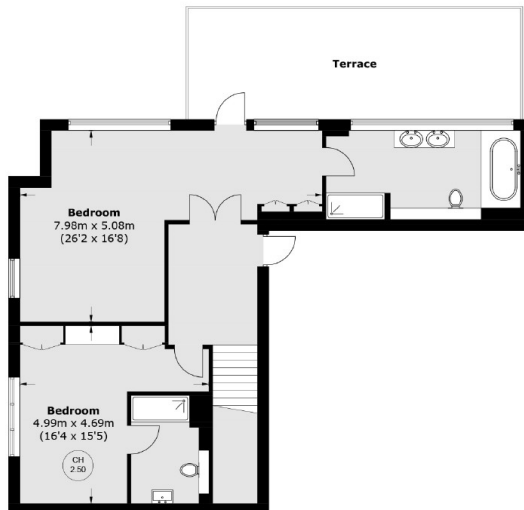
Further benefitting from solid wood flooring, air conditioning and at an additional cost, access to the facilities of the London Marriott Hotel including use of the gym, swimming pool, underground parking and room service.



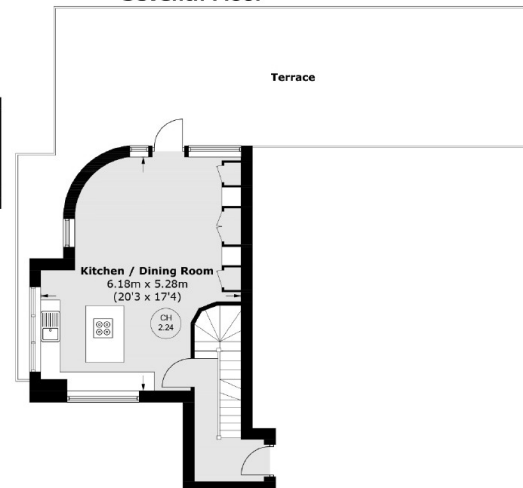
North Row, London, W1K



Seventh Floor



Fifth Floor



Sixth Floor

Total area (approx.): 134.6 sq. m (1,448.9 sq. ft)
Terrace : 101.4 sq. m (1,091.4 sq. ft)