



Albemarle Street, W1S

£825 Per week

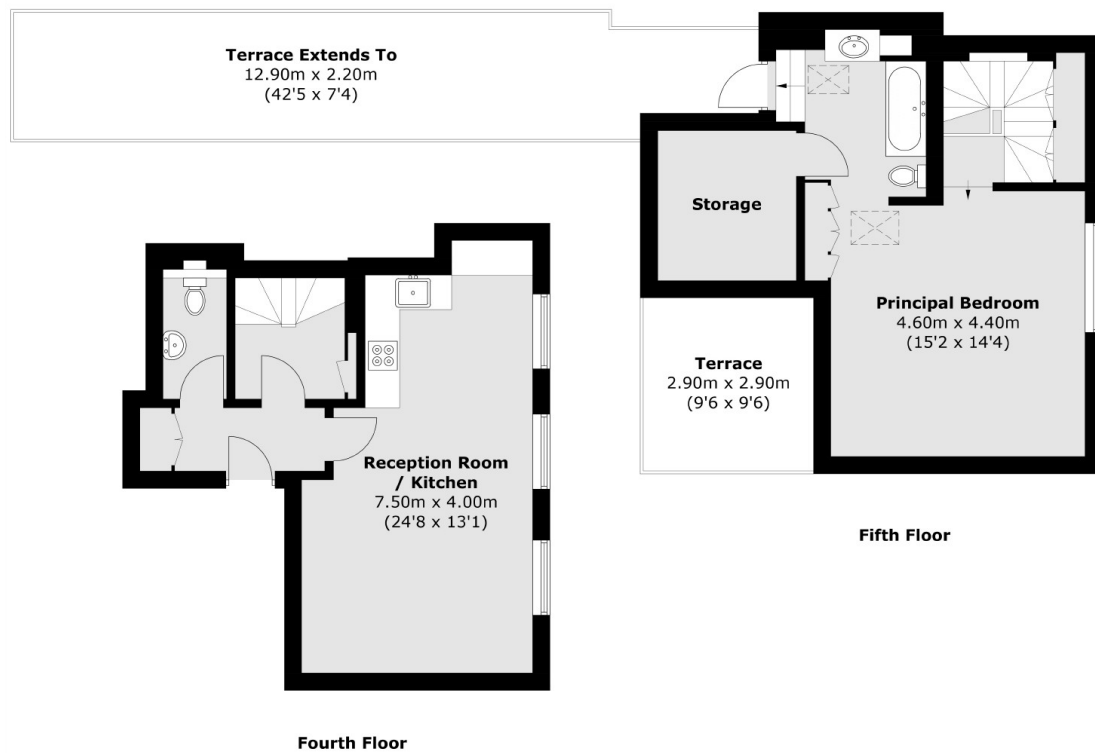
A spacious one bedroom split-level flat located in a well maintained Georgian building with a large private roof terrace.

Albemarle Street is ideally located for Green Park tube station on the Piccadilly, Victoria and Jubilee lines. Piccadilly Circus and the amenities and attractions of the West End are close by.

Features

- Spacious Double Bedroom
- Modern Fixtures & Fittings
- Wooden Flooring
- Split-Level
- Private Roof Terrace
- Excellent Location

Albemarle Street, London, W1S



Total area (approx.): 76 sq. m (812.0 sq. ft)
Terrace (approx.): 35.5 sq. m (382.1 sq. ft)