

Albemarle Street, W1S

£750 Per week

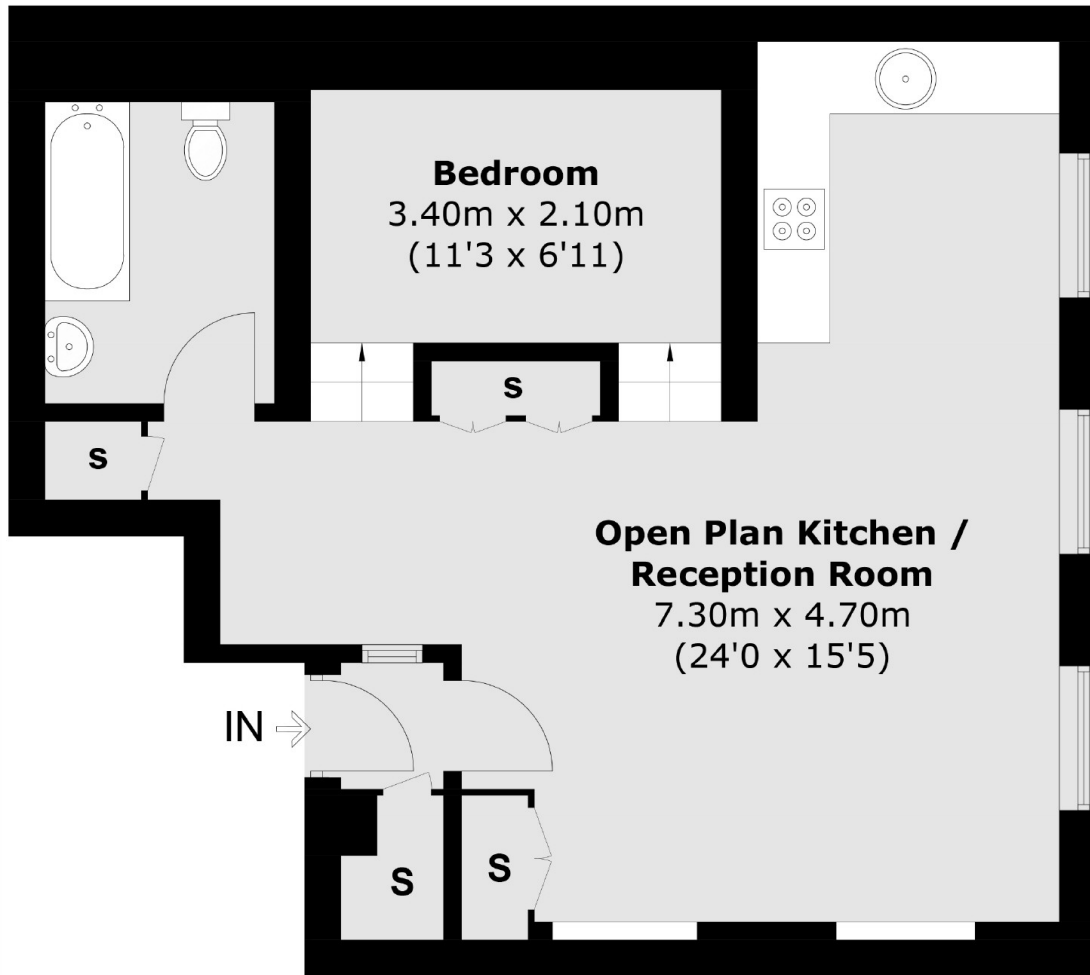
A recently decorated apartment located in an attractive Georgian building with mezzanine level with double bedroom.

Albemarle Street is ideal for Green Park tube station on the Piccadilly, Victoria and Jubilee lines. Piccadilly Circus and the amenities and attractions of the West End are close by.

Features

- Mezzanine Sleeping Area
- High Ceilings
- Wooden Flooring
- Modern Fixtures & Fittings
- Built-In Storage
- Excellent Location

Albemarle Street, London, W1S



Third Floor

Total area (approx.): 54 sq. m (586 sq. ft)