



Pall Mall, SW1Y

£625 Per week

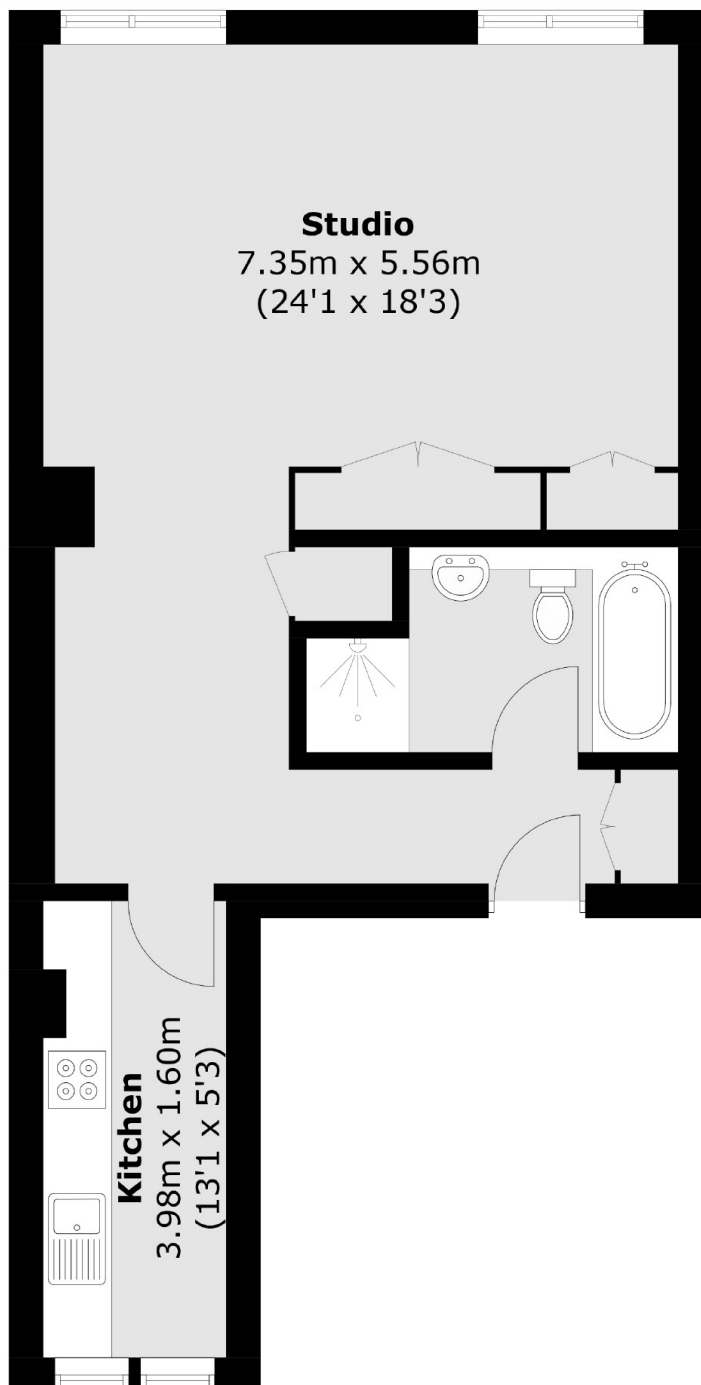
A superb studio apartment with fantastic southerly views over Pall Mall, The Mall, St James's Palace and St James's Park.

The property is conveniently located on Pall Mall close to St James' Park and Green Park underground station (Jubilee, Piccadilly and Victoria lines).

Features

- Studio Apartment
- Modern Fixtures & Fittings
- Wooden Flooring
- Built in Storage
- Separate Kitchen
- Lift Access

Pall Mall, London, SW1Y



Total area (approx.): 47.6 sq. m (512.3 sq. ft)