

## Mount Street, W1K

£1,100 Per week

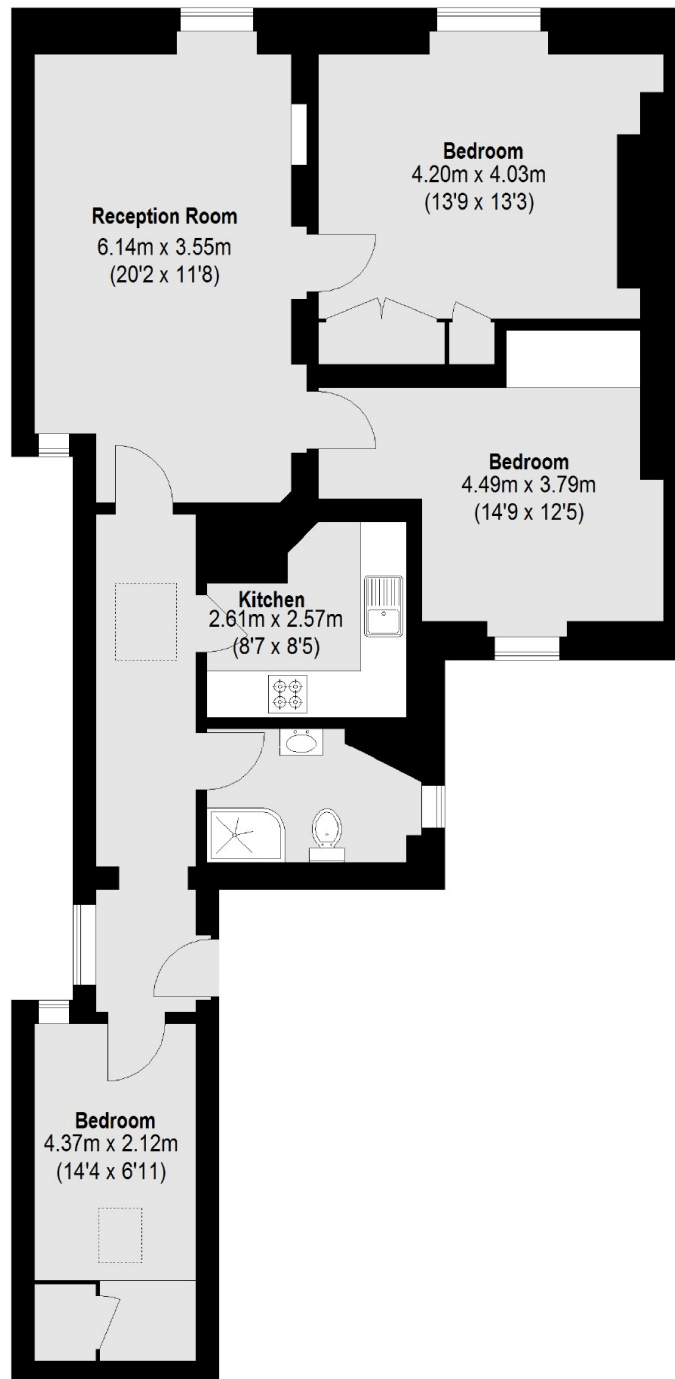
This three bedroom apartment is enviably located in a beautiful building on one of Mayfair's most prestigious streets Mount street, just off Berkeley Square.

Mayfair's most highly regarded residential street, Mount Street is close to the Connaught Hotel, Mount Street Gardens and the bustling Berkeley Square.

### Features

- Three Bedrooms
- Separate Kitchen
- Modern Bathroom
- Flexible Furnishings
- Spacious Reception Room
- Excellent Location

# Mount Street, London, W1K



Fourth Floor

Total area (approx.): 87.34 sq. m (940 Sq. ft)