



Albemarle Street, W1S

£475 Per week

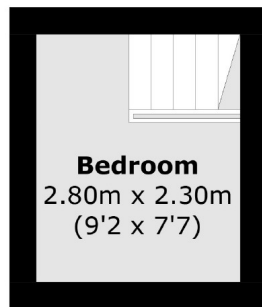
A recently decorated apartment located in an attractive Georgian building with mezzanine level with double bedroom.

Albemarle Street is ideal for Green Park tube station on the Piccadilly, Victoria and Jubilee lines. Piccadilly Circus and the amenities and attractions of the West End are close by.

Features

- Mezzanine Sleeping Area
- Wooden Flooring
- Modern Fixtures & Fittings
- Lift Access
- Built-In Storage
- Excellent Location

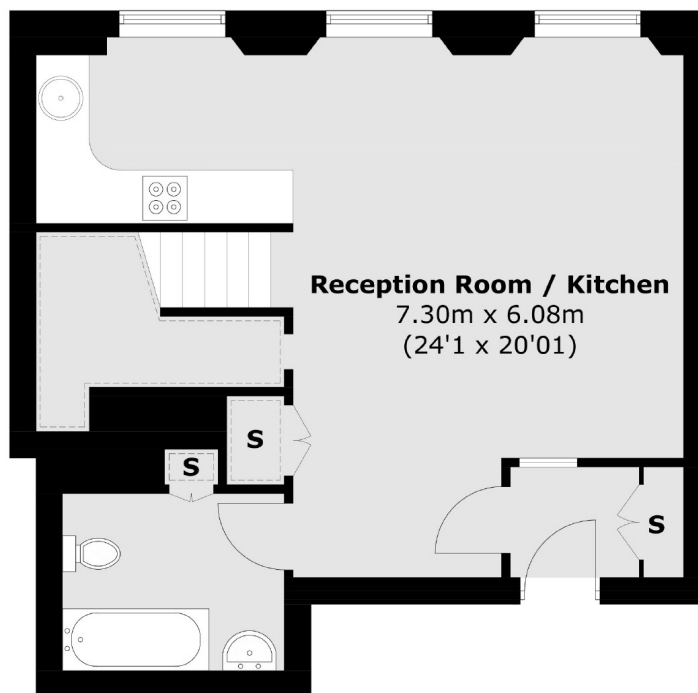
Albemarle Street, London, W1S



Bedroom
2.80m x 2.30m
(9'2 x 7'7)

= Reduced headroom below 1.5m / 5'0

Upper Mezzanine



First Floor

Contact

To arrange a viewing call our office on the number below or visit our website.



Energy Rating: D. We aim to make our particulars both accurate and reliable. However they are not guaranteed; nor do they form part of an offer or contract. If you require clarification on any points then please contact us, especially if you're traveling some distance to view. Please note that appliances and heating systems have not been tested and therefore no warranties can be given as to their good working order.