



Bourdon Street, W1K

£1,750 Per week

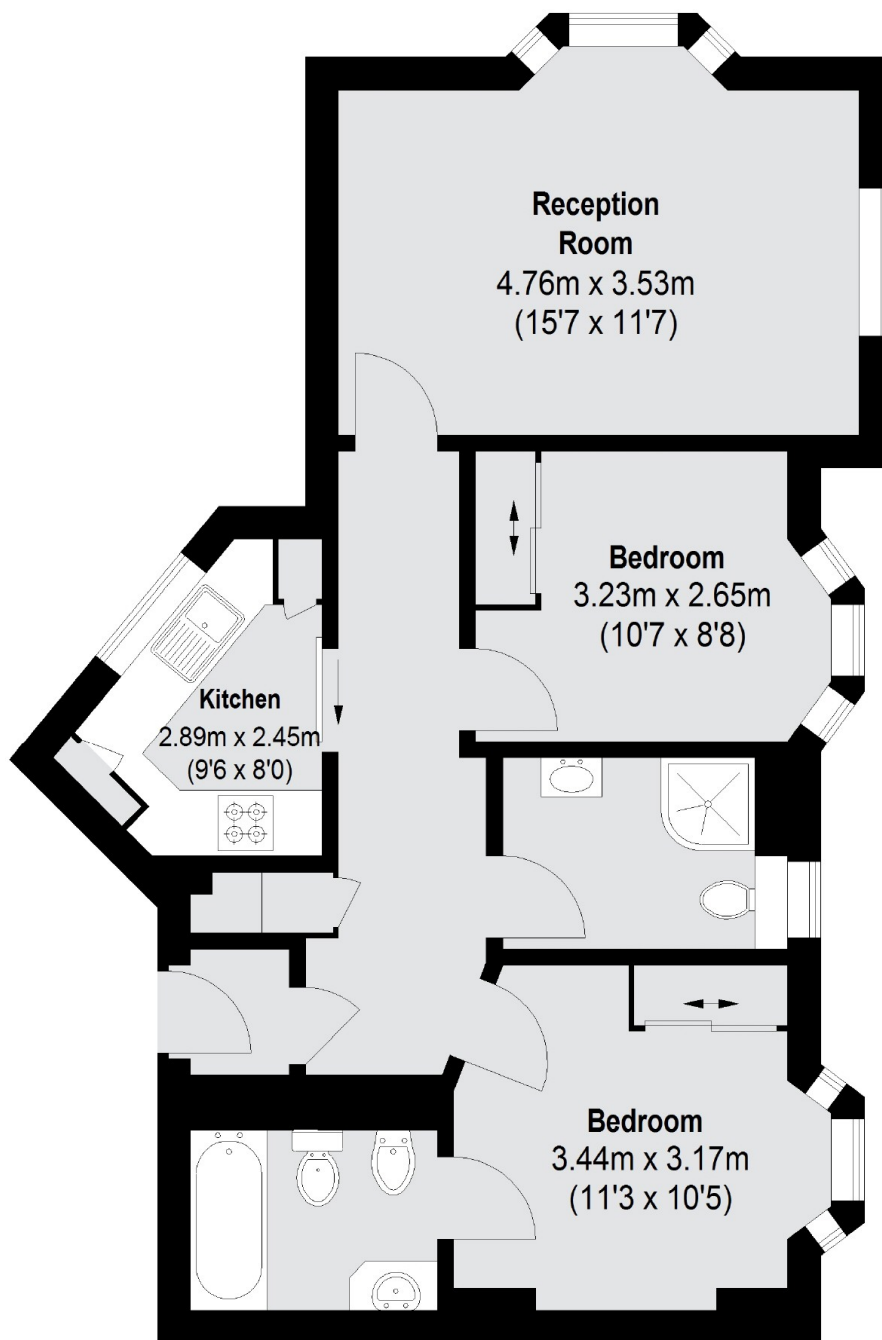
This well proportioned newly refurbished two double bedroom, two bathroom apartment is located in a secure development off Berkeley Square.

Located off Berkeley Square in the heart of Mayfair, Bloomfield Court is very close to Regent Street, Bond Street and Green Park.

Features

- Two Double Bedrooms
- Two Bathrooms
- Wooden Flooring
- Lift Access
- Modern Kitchen
- Secure Development

Bourdon Street, London, W1K



Second Floor

Total area (approx.): 60.66 sq. m (653 Sq. ft)