



Bourdon Street, W1K

£2,150 Per week

A well presented and spacious two double bedroom apartment with a communal roof terrace, lift and porter.

Located off Berkeley Square in the heart of Mayfair, Grosvenor Hill Court is very close to Regent Street, Bond Street and Green Park stations.

Features

- Two Double Bedrooms
- Two Modern Bathrooms
- Roof Garden
- Fourth Floor (Lift Access)
- Open Plan Reception
- Portered Building

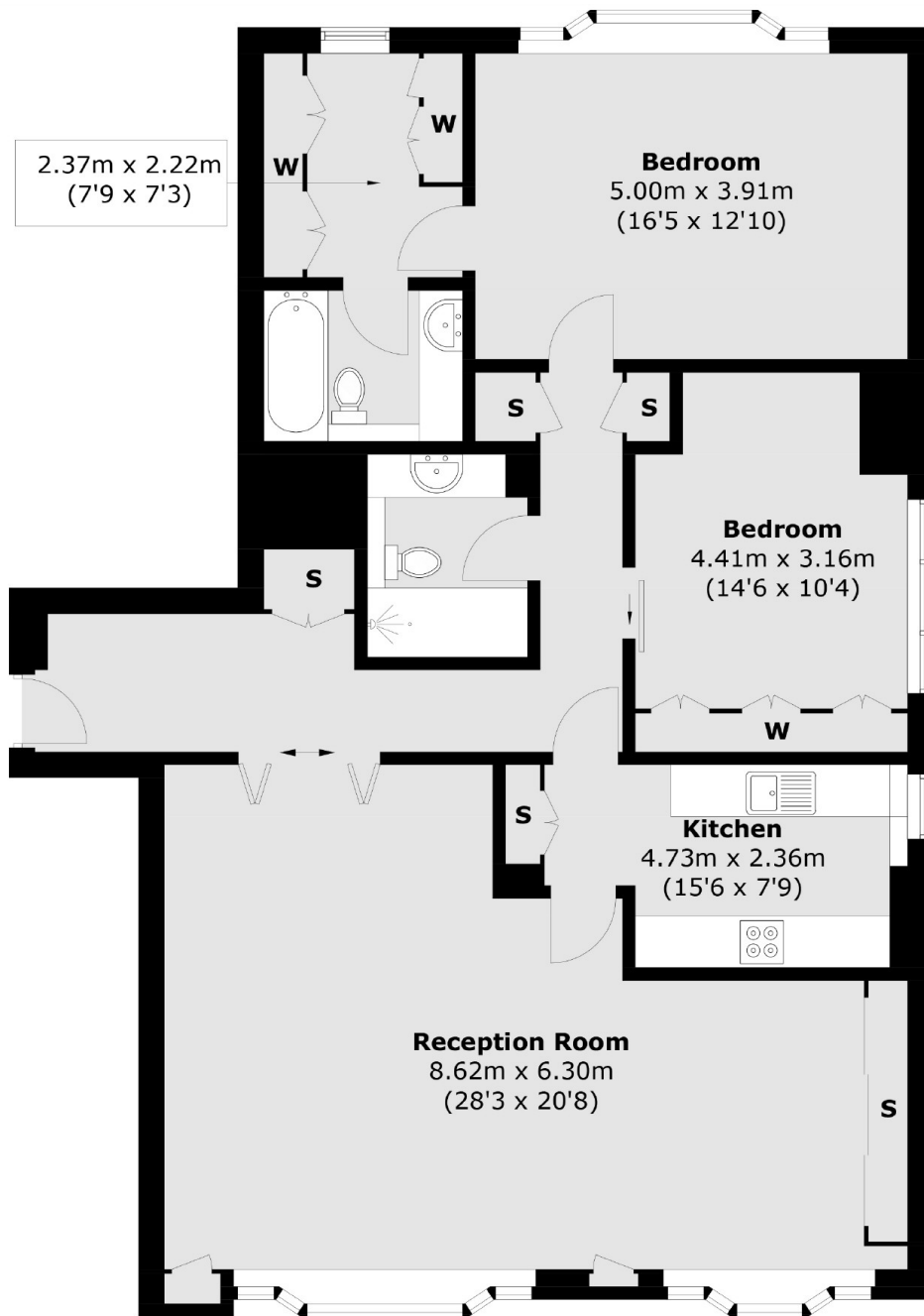


Bourdon Street, W1K

Situated on the fourth floor, this recently renovated apartment offers a generous reception room with dining area and contemporary kitchen. The principal bedroom has an en suite bathroom and walk-in wardrobe, there is a second double bedroom with built-in storage, a separate shower room, lift and porter.



Bourdon Street, London, W1K



Fourth Floor

Total area (approx.): 119.4 sq. m (1,285.2 sq. ft)