



Pall Mall, SW1Y

£675 Per week

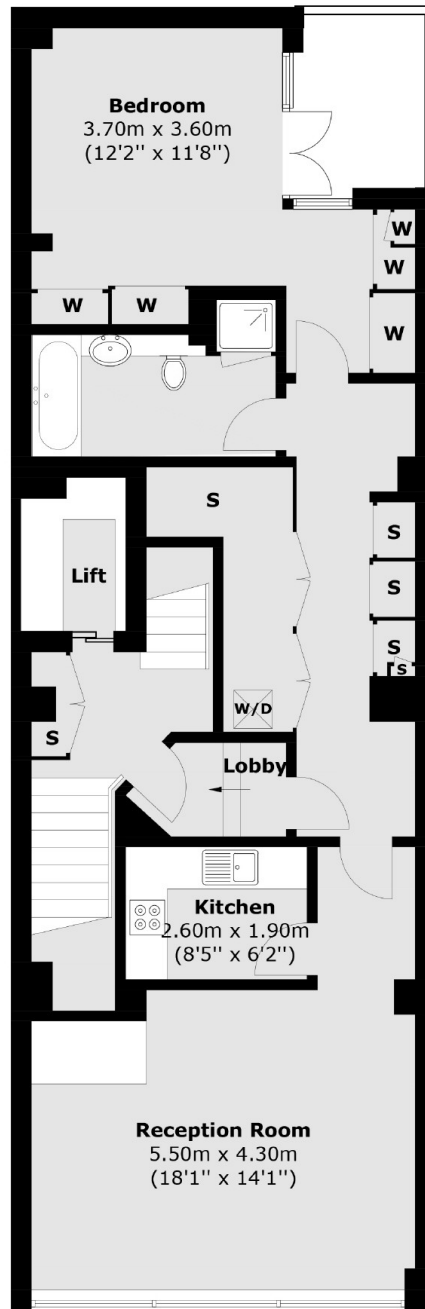
A superb one bedroom apartment with fantastic southerly views over Pall Mall, The Mall, St James's Palace and St James's Park.

The property is conveniently located on Pall Mall close to St James' Park and Green Park underground station (Jubilee, Piccadilly and Victoria lines).

Features

- Spacious Double Bedroom
- Modern Fixtures & Fittings
- Wooden Flooring
- Built-In Storage
- Separate Kitchen
- Lift Access

Pall Mall, London, SW1Y



First Floor