



Pall Mall, SW1Y

£625 Per week

A superb studio apartment with fantastic southerly views over Pall Mall, The Mall, St James's Palace and St James's Park. This property has been meticulously designed and benefits from air-conditioning.

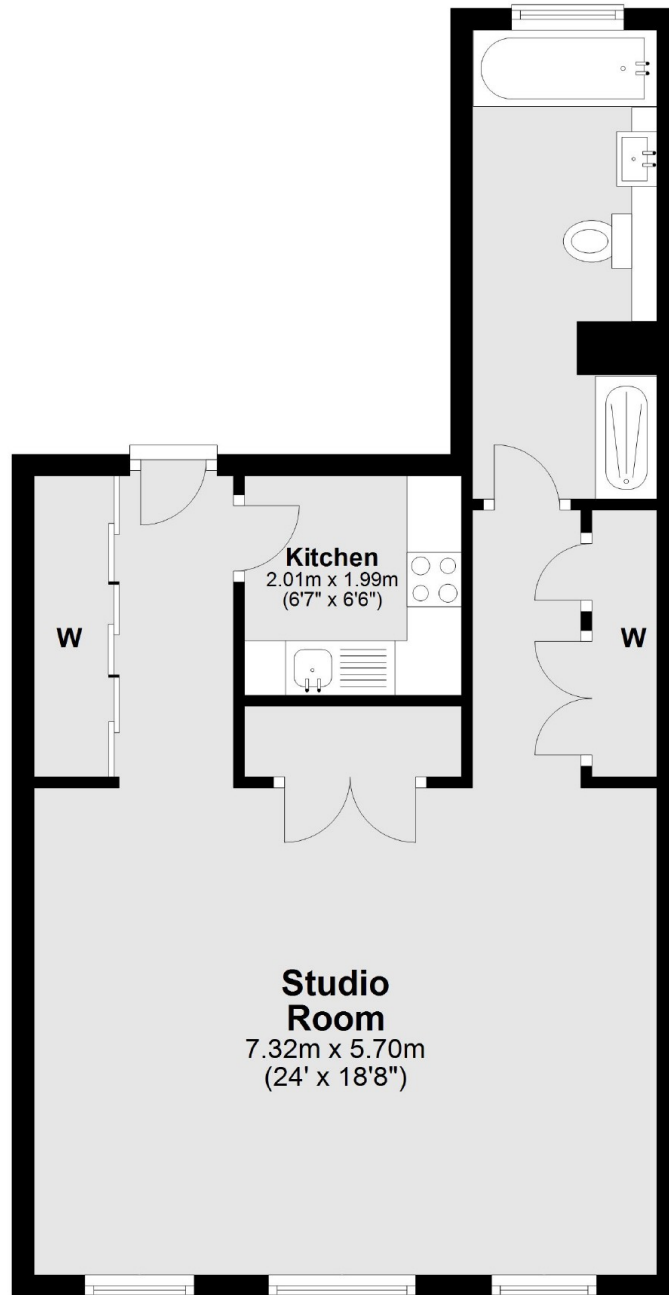
The property is conveniently located on Pall Mall close to St James' Park and Green Park underground station (Jubilee, Piccadilly and Victoria lines).

Features

- Studio Apartment
- Modern Fixtures & Fittings
- Wooden Flooring
- Built-In Storage
- Separate Kitchen
- Lift Access

Pall Mall, London, SW1Y

Fifth Floor



Total area: approx. 48.6 sq. metres (523.1 sq. feet)