



## Reeves Mews, W1K

£1,700 Per week

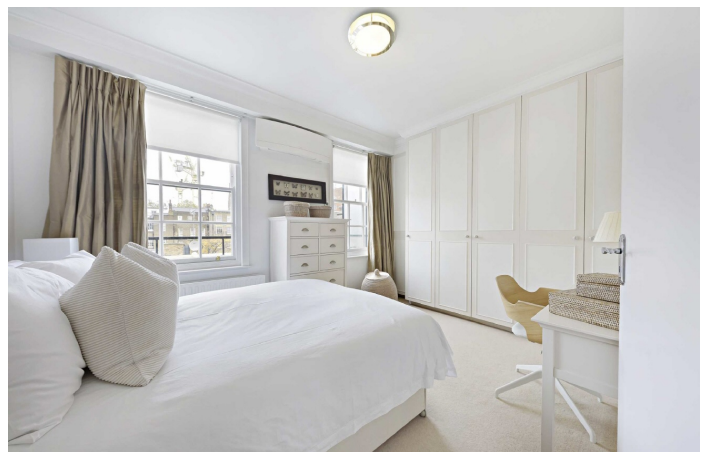
A recently refurbished fourth floor two bedroom apartment in this well maintained building with resident caretaker in the heart of Mayfair.

Reeves Mews is located between Park Street and South Audley Street close to the Grosvenor House Hotel and the open spaces of Hyde Park.

### Features

- Two Double Bedrooms
- Two Bathrooms
- Two Private Balconies
- Built-In Storage
- Resident Caretaker
- Lift Access





## Reeves Mews, W1K

The property consists of principal bedroom with en suite bathroom, second double bedroom, a further bathroom, a large reception room with dining area and separate kitchen.

The flat has been finished to the highest of standards and it further benefits from a large balcony, accessed from the reception room.

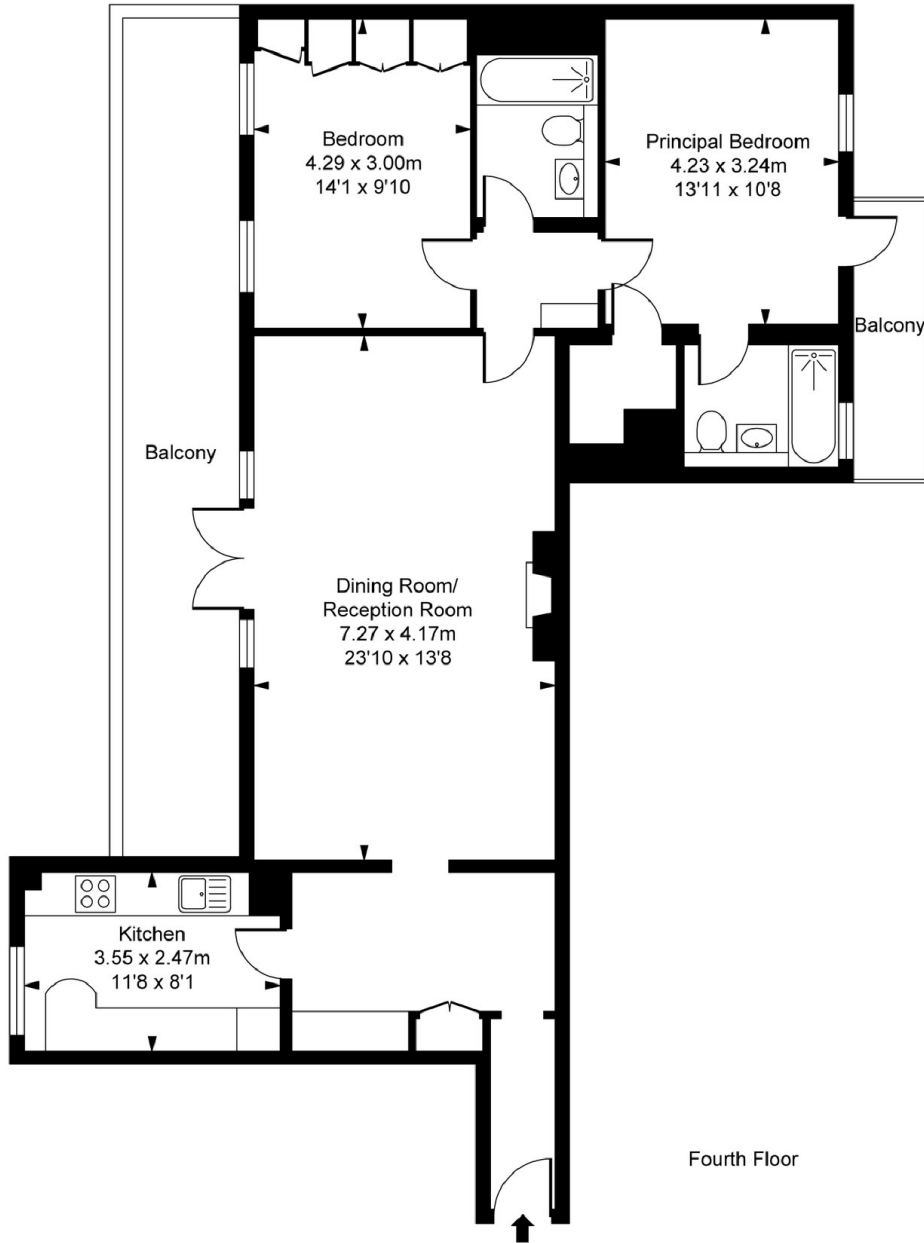
Situated on the top floor (with lift) of a well maintained purpose block, the apartment features quiet south-facing views, creating a bright and airy living space.





# Reeves Mews, London, W1K

## Park Mount Lodge, Reeves Mews, W1K Approximate Gross Internal Area 92.45 sq m / 995 sq ft



This plan is not to scale. It is for guidance and not for valuation purposes.  
All measurements and areas are approximate only, and have been prepared in accordance with the current edition of the RICS Code of Measuring Practice.  
© Fulham Performance

# Dexters

Mayfair  
102 Mount Street  
London  
W1K 2TH  
Lettings  
020 7529 5588

Energy Rating: D. We aim to make our particulars both accurate and reliable. However they are not guaranteed; nor do they form part of an offer or contract. If you require clarification on any points then please contact us, especially if you're traveling some distance to view. Please note that appliances and heating systems have not been tested and therefore no warranties can be given as to their good working order.



dexters.co.uk