



Park Street, W1K

£4,000 Per week

A beautifully presented lateral flat on the fourth floor of this period purpose built block which benefits from a lift and portorage.

Park Street is in a prime Mayfair location near to the smart restaurants and boutique shops of Mount Street. Further local amenities are the green open spaces of Hyde Park and Grosvenor Square.

Features

- Four Double Bedrooms
- Four Bathrooms
- Lateral
- Portered Building
- Wooden Flooring

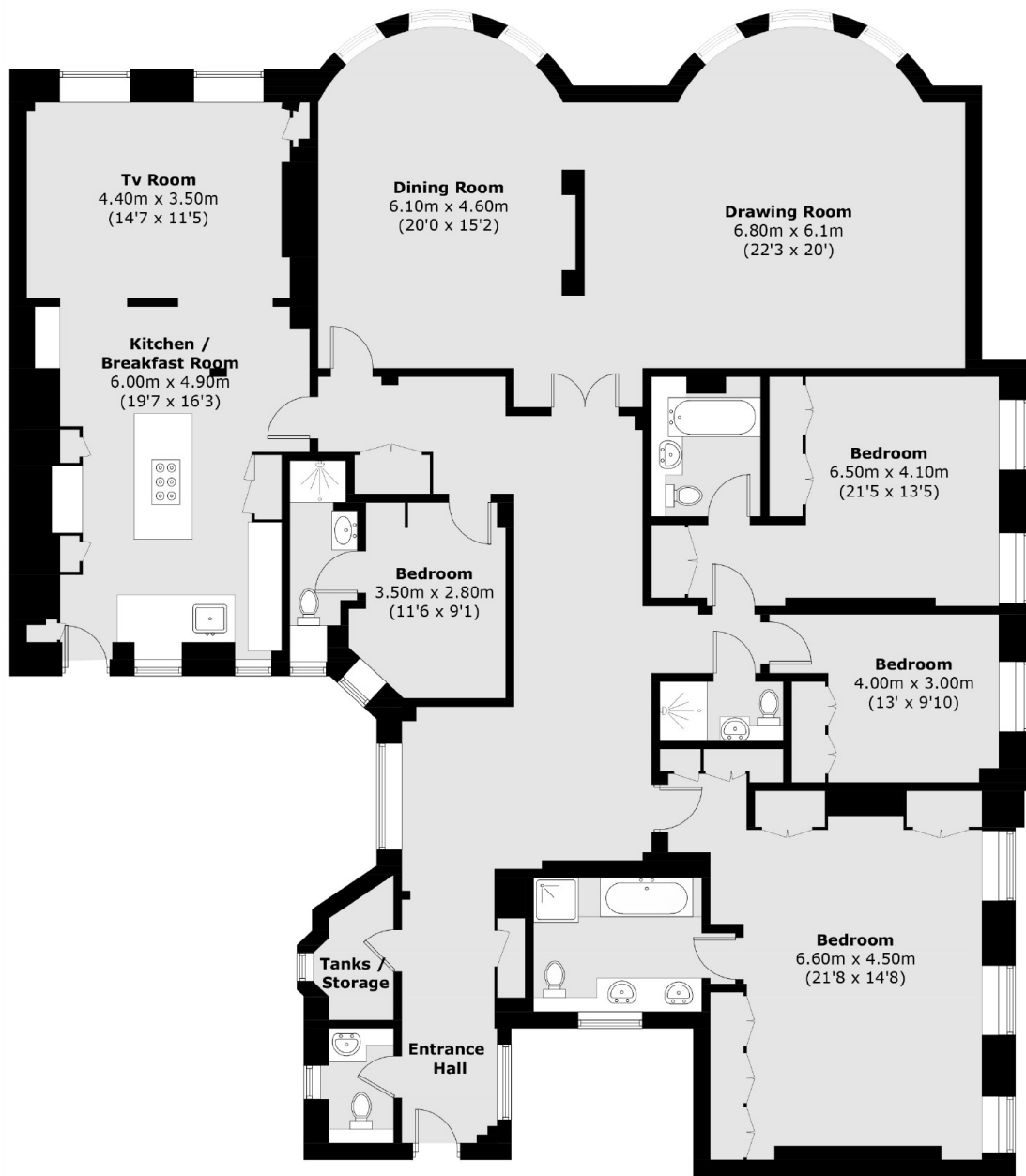


Park Street, W1K

This apartment benefits from a bright entrance hall, a beautifully decorated reception and dining room. The apartment also features a spacious kitchen and breakfast room, with an open plan family room, four double bedrooms (three en suite bathrooms), further shower room and a cloakroom.



Park Street, London, W1K



Fourth Floor

Total area (approx.): 263.8 sq. m (2839.5 sq. ft)