



## Park Place, SW1A

£2,100 Per week

Offering sophistication and tranquillity the Duplex at Park Place Residences is the epitome of luxury city living.

It is discreetly located in the heart of St James's, surrounded by royal parkland and prestigious London Landmarks.

### Features

- Open-Plan Kitchen and Reception
- Large Principal Suite
- Two Double Bedrooms with En-Suites
- Additional Storage Rooms
- Day Porter
- Luxury Fixtures, Fittings and Furnishings



## Park Place, SW1A

The spacious reception room is perfectly suited for both relaxing and entertaining, boasting a state of the art open plan kitchen fitted with Gaggenau appliances.

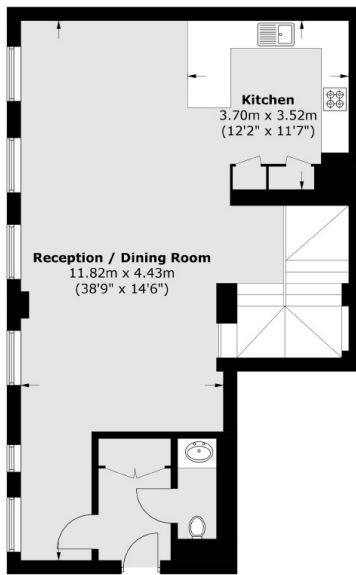
The principal bedroom is the perfect place to relax and unwind and benefits from a bespoke bathroom finished with the finest materials to create an indulgent spa-like experience.

Bedroom two also benefits from an en-suite and stands out from the competition with its abundance of additional storage space.

Just a stone's throw from the newly open Arlington restaurant and the Ritz hotel. Park Place Residences is an impeccably restored Art Deco-inspired building with a day porter service.



# Park Place, London, SW1A



**Ground Floor**



**Lower Ground Floor**

Total area (approx.): 182.8 sq. m (1,967.6 sq. ft)