



Balfour Place, W1K

£1,595 Per week

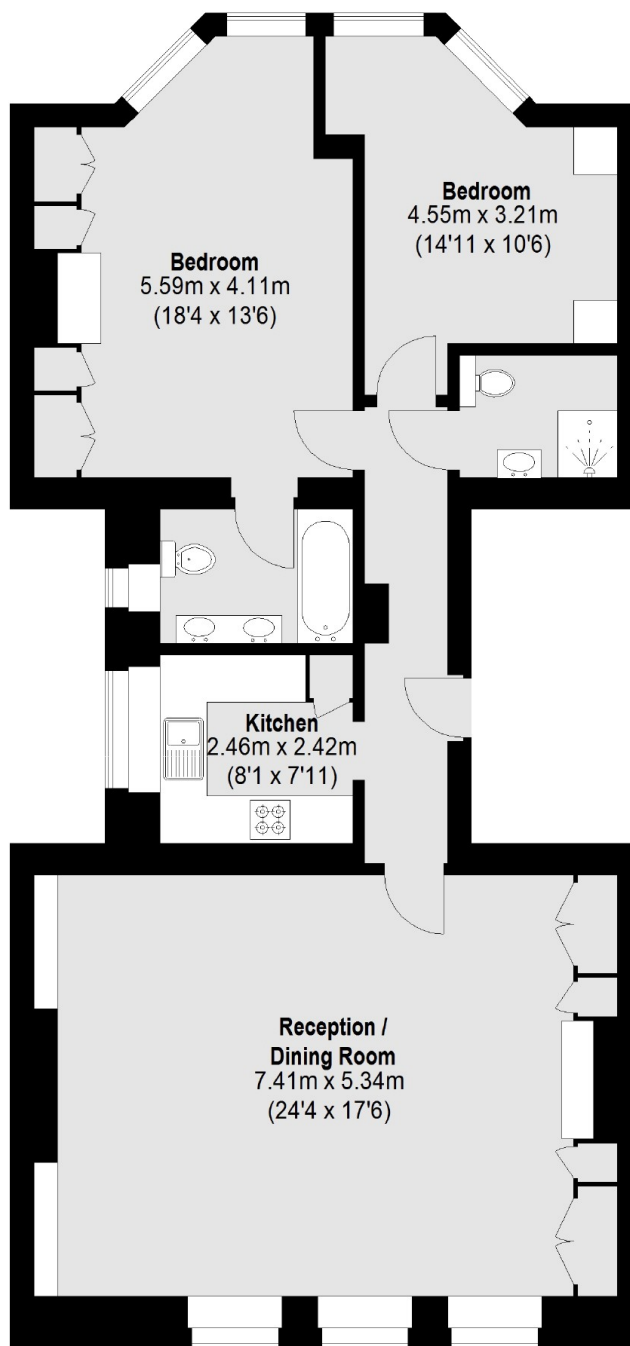
An elegant two double bedroom first floor apartment (with lift), in the heart of prime Mayfair with good natural light throughout.

Balfour Place is in the heart of Mayfair Village with easy access to the local restaurants, shops and cafés of Mount Street as well as the open spaces of Hyde Park.

Features

- Two Double Bedrooms
- Two Bathrooms
- Excellent Location
- Lift Access
- Modern Kitchen
- Day Porter

Balfour Place, London, W1K



First Floor

Total area (approx.): 103.32 sq. m (1112 Sq. ft)