



Park Street, W1K

£1,425 Per week

A newly renovated two bedroom apartment on the second floor of a red brick, period conversion in a highly sought after Mayfair location.

Set close to Oxford Street and Marble Arch station, this property is conveniently located within easy reach of the shops and restaurants of Mayfair.

Features

- Two Double Bedrooms
- Two Modern Bathrooms
- Brand New Renovation
- Furnished
- CCTV and Secure Entry Systems
- Wooden Flooring



Park Street, W1K

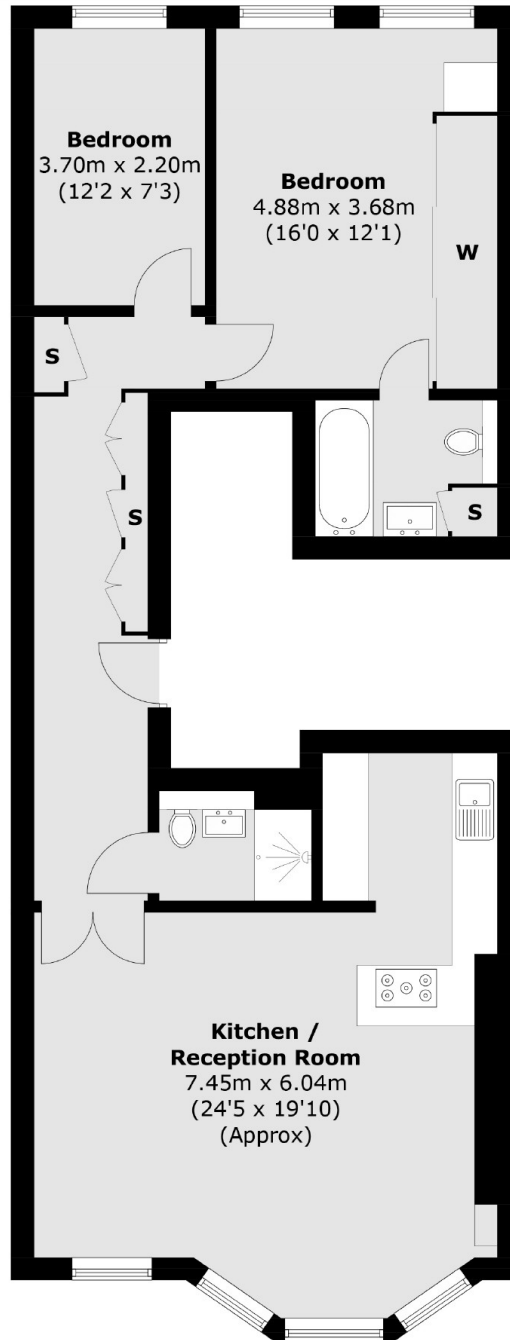
The apartment has been newly renovated throughout, offering two double bedrooms with two modern bathrooms.

The open plan kitchen/living area offers a breakfast bar as well as dining and entertaining space.

The apartment has been furnished to an exceptional standard as well as boasting high ceilings, wooden flooring, air conditioning, Banham security and home automation system.



Park Street, London, W1K



Second Floor

Total area (approx.): 82.4 sq. m (886.9 sq. ft)