



## Curzon Street, W1J

£2,400 Per week

This two bedroom penthouse apartment is in an attractive Georgian conversion with direct lift access and a private roof terrace.

Curzon Street is close to Shepherd Market which contains many fine restaurants and private members clubs. Hyde Park is only a short walk away and there are numerous transport links, including Green Park, Hyde Park.

### Features

- Two Double Bedrooms
- Two Bathrooms
- Penthouse
- Private Roof Terrace
- Air-Conditioning
- Lift Access





## Curzon Street, W1J

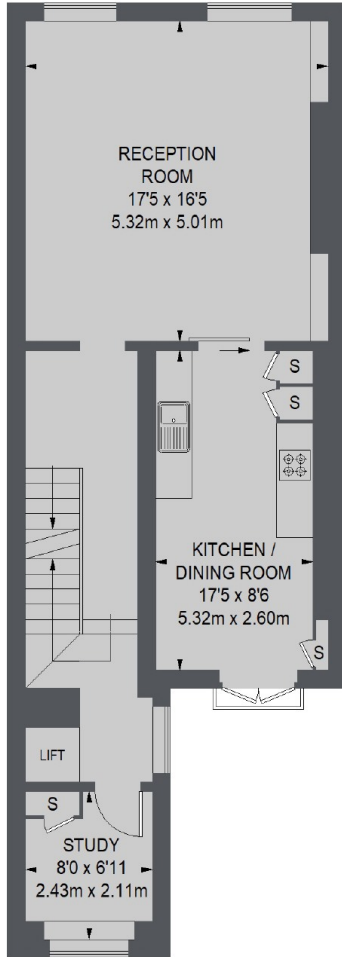
The property is arranged over two floors and has been refurbished to a high standard throughout, with air conditioning and a concierge service.

There is a large reception room with wood flooring and a sliding door through to the kitchen/dining room, two good sized double bedrooms with built-in storage and a modern bathroom and shower room.

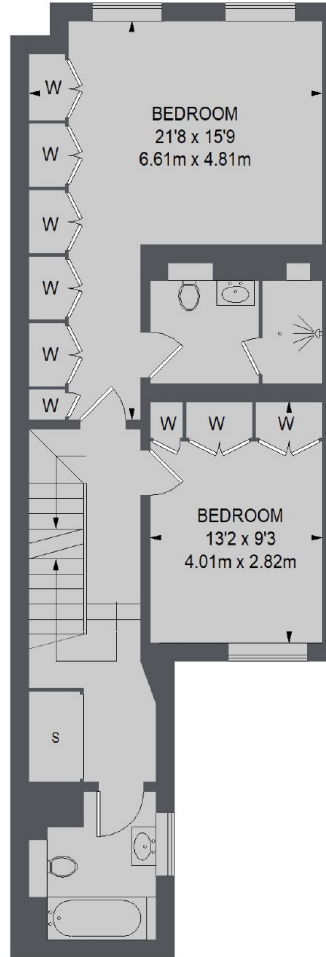




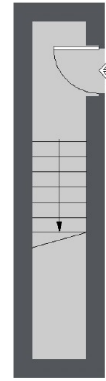
# Curzon Street, London, W1J



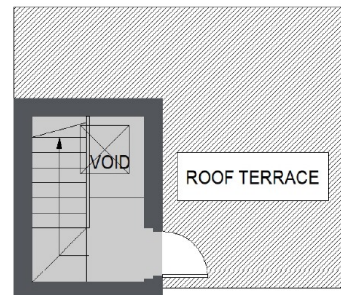
**FOURTH FLOOR**



**FIFTH FLOOR**



**THIRD FLOOR**



**SIXTH FLOOR**

TOTAL APPROX. FLOOR AREA  
(EXCLUDING LIFT)  
1431 SQ. FT. (132.9 SQ. M.)