



Hays Mews, W1J

£2,200 Per week

Located off Berkeley Square, this three bedroom mews apartment has been refurbished to an excellent standard throughout.

The apartment is located on the corner of Hays Mews and Chesterfield Hill, close to the open spaces of Green Park and Hyde Park.

Features

Recently Refurbished
Three Double Bedrooms
Two Bathrooms
Wooden Flooring
Lucarna Furniture
Double Reception



Hays Mews, W1J

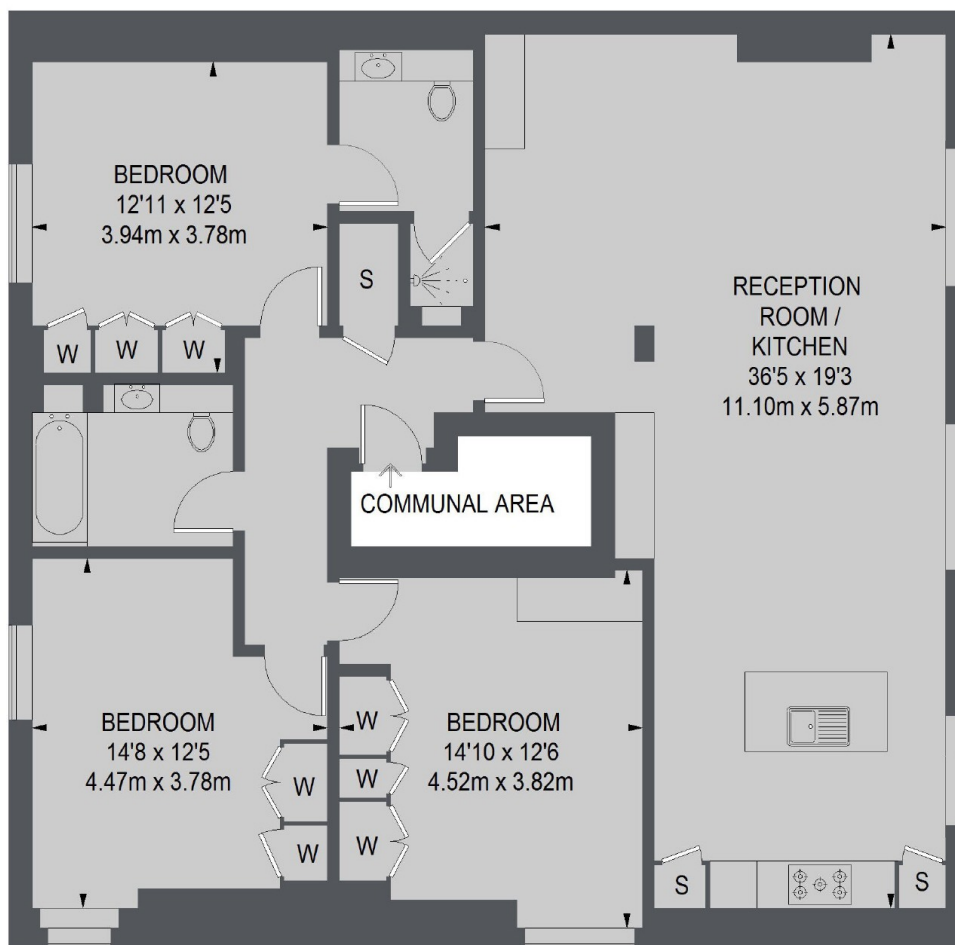
The open plan kitchen / reception boasts excellent dining and entertaining space, perfect for both relaxing or entertaining guests.

Large principal bedroom with luxury en suite bathroom and built in storage and two further double bedrooms with built in storage and additional family bathroom.

The property has been recently renovated offering wooden flooring, characterful exposed timber beams and contemporary fixtures, fittings and furnishings throughout.



Hays Mews, London, W1J



SECOND FLOOR

TOTAL APPROX. FLOOR AREA 1325 SQ. FT. (123.14 SQ. M.)
(EXCLUDING COMMUNAL AREA)