



Hertford Street, W1J

£1,420 Per week

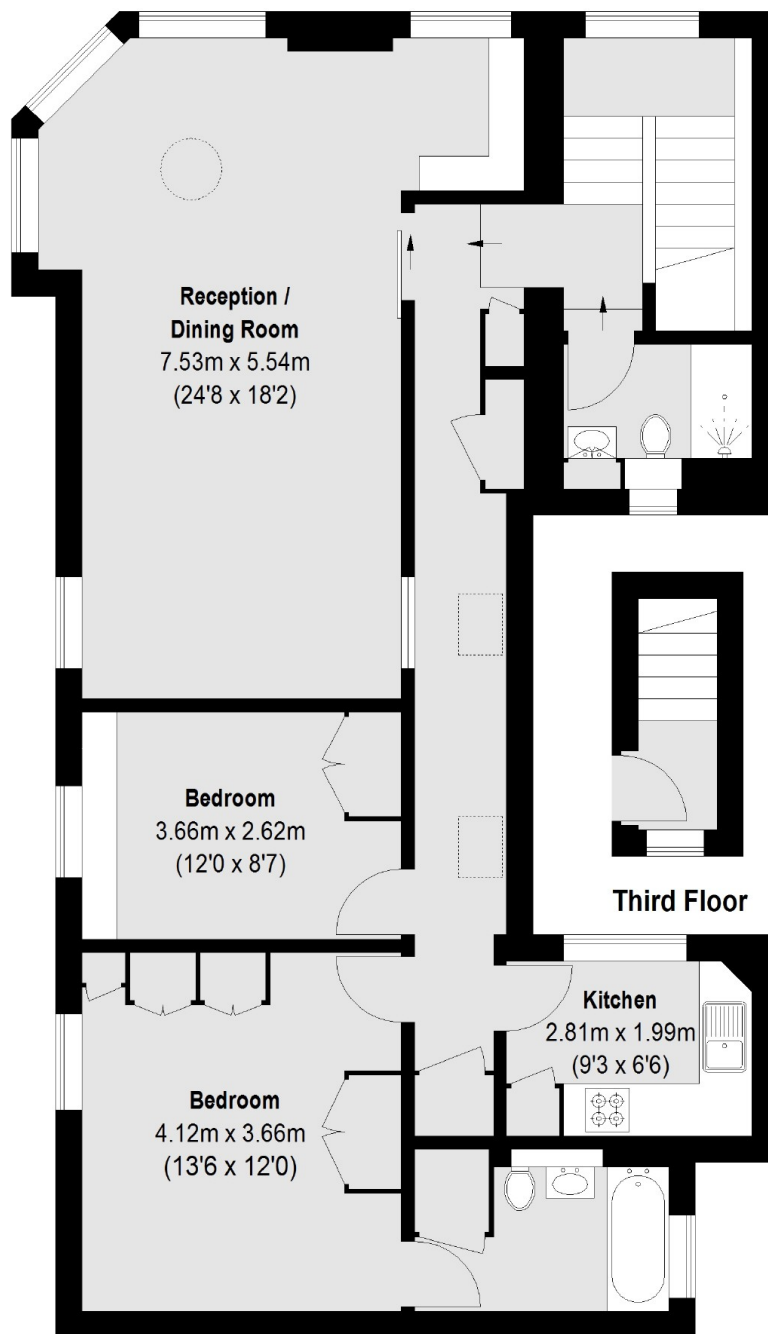
A stunning, newly decorated two bedroom lateral apartment, set in the heart of Shepherd's Market. This apartment benefits from abundance of natural light and is to a high specification.

Hertford Street runs parallel to Curzon Street and Piccadilly and is conveniently situated for the restaurants and bars of Shepherd Market. The closest tubes are Green Park and Hyde Park Corner.

Features

- Two Double Bedrooms
- Two Bathrooms
- Wooden Flooring
- Top Floor Flat
- Separate Kitchen
- Modern Fixtures & Fittings

Hertford Street, London, W1J



Fourth Floor

Total area (approx.): 97.62 sq. m (1051 Sq. ft)