



Shepherds Close, W1K

£4,750 Per week

A beautifully presented four bedroom house finished to an excellent standard with luxurious fixtures and fittings throughout.

Shepherds Close is situated off Lees place, a short distance from Grosvenor Square. It is well placed for the internationally renowned shops restaurants and amenities of Mayfair.

Features

- Four Double Bedrooms
- Four Bathrooms
- Luxury Finish
- Private Patio
- Three Reception Rooms
- Communal Garden



Shepherds Close, W1K

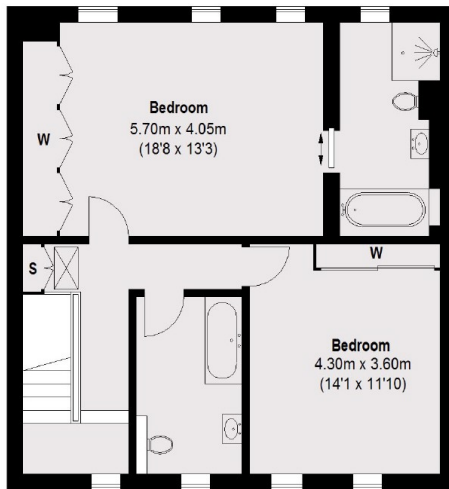
Accommodation consists of a reception room, TV room and a large eat-in kitchen. There is a main bedroom with dressing area and en suite bathroom, two further double bedrooms one with en suite, further bathroom, staff quarters and a small office.

The property has a charming patio and a secluded communal garden.

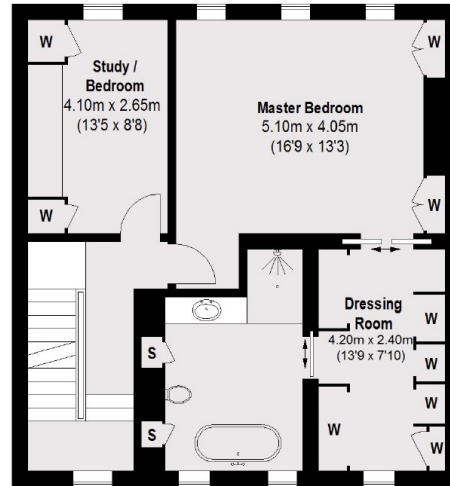
The house further benefits from Crestron controlled automation for heating/air-conditioning, door entry system, lighting, TV and audio.



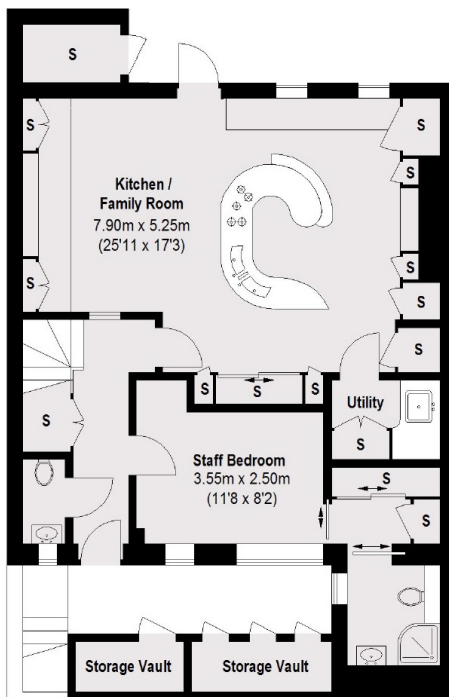
Shepherds Close, London, W1K



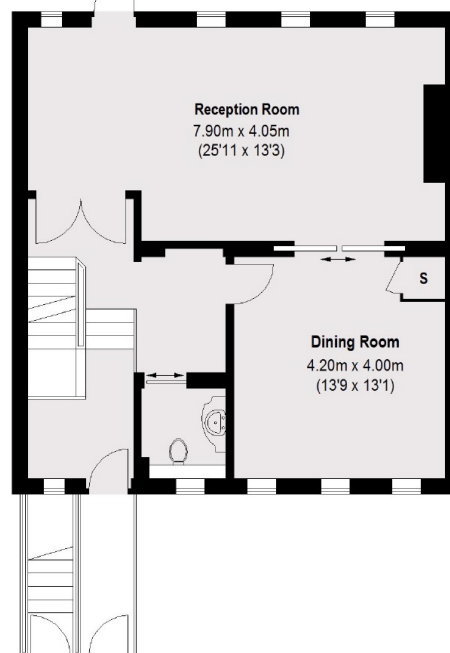
Second Floor



First Floor



Lower Ground Floor



Ground Floor

Total area (approx.): 274.16 sq. m (2951 sq. ft)

Vault: 4.61 sq. m (50 sq. ft)