



Berkeley Street, W1J

£1,015 Per week

Dexters



Berkeley Street, W1J

A charming, newly renovated two double bedroom apartment on the first floor of a period building just south of Berkeley Square.

A charming, newly renovated two double bedroom apartment on the first floor of a period building just south of Berkeley Square. The property benefits from wooden floors throughout and a dedicated porter service.

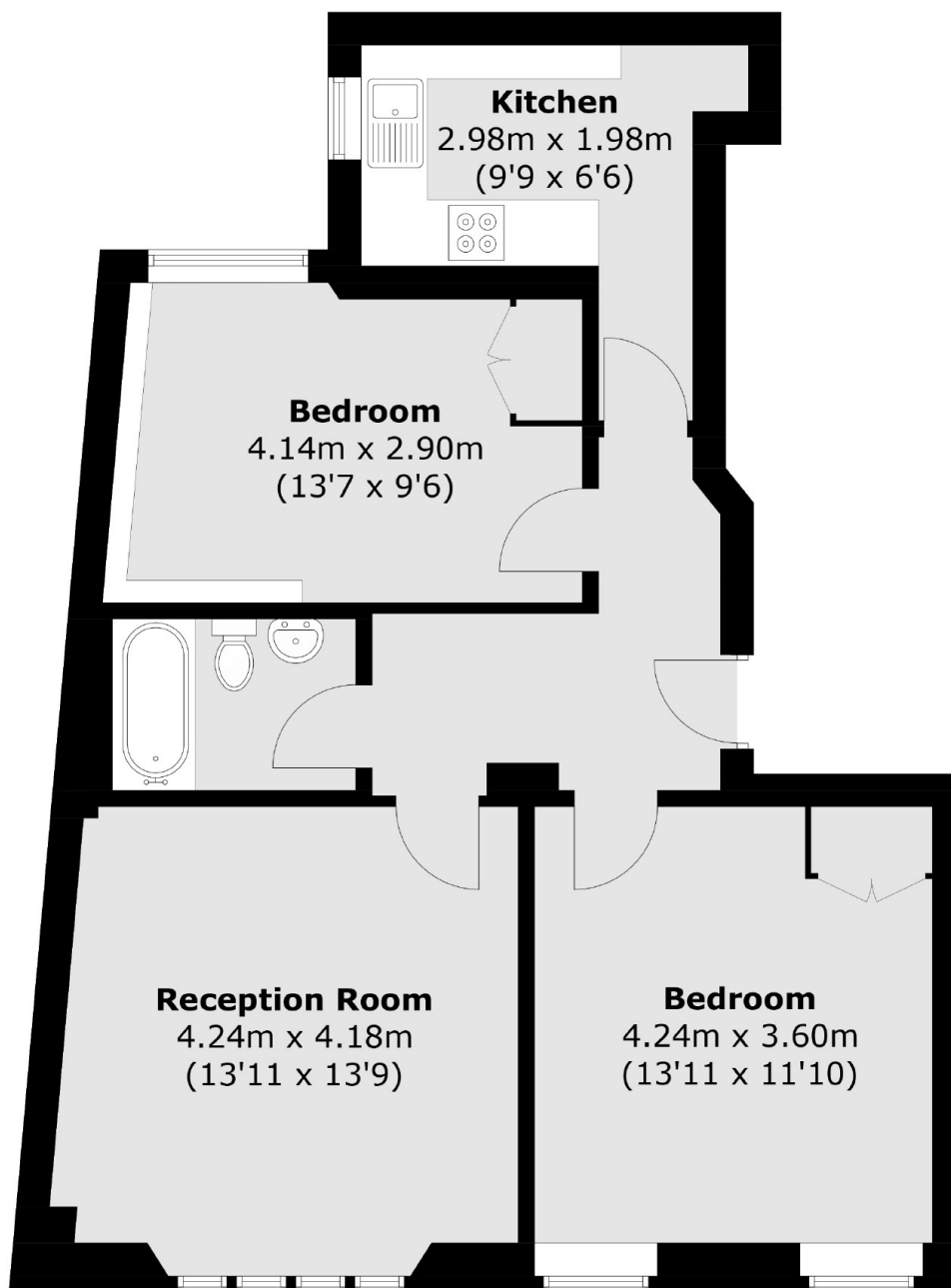
Berkeley Street runs south from Berkeley Square to Piccadilly and is ideal for Green Park tube station on the Piccadilly, Victoria and Jubilee lines. Piccadilly Circus and the amenities and attractions of the West End are close by.

Features

- Two Double Bedrooms
- Newly Renovated
- Wooden Flooring
- Day Porter
- Lift Access
- Excellent Location



**Berkeley Street,
London, W1J**



First Floor

Total area (approx.): 66.1 sq. m (711.5 sq. ft)