

Albemarle Street, W1S

£750 Per week

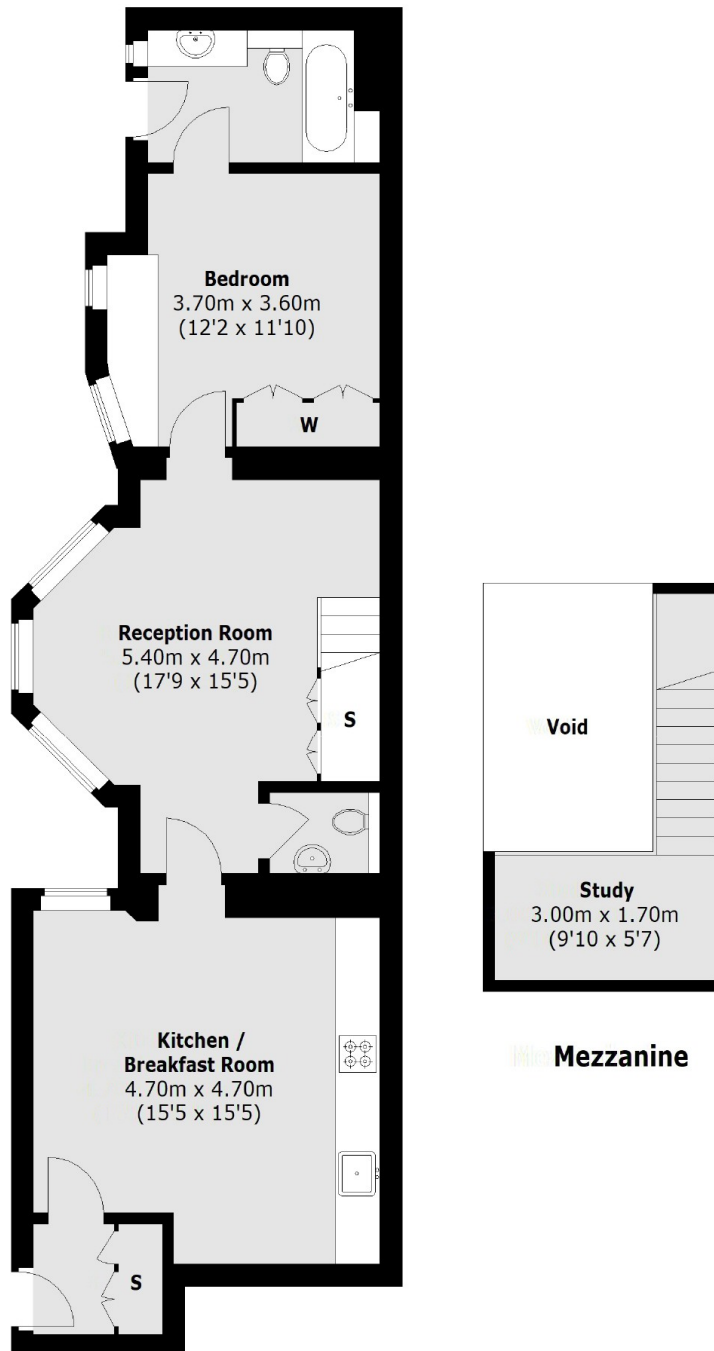
A spacious one bedroom flat located on the first floor of a well maintained Georgian building complete with a reception room with galleried study area, separate kitchen/breakfast room, bedroom with en suite bathroom and guest W/C.

Albemarle Street is ideally located for Green Park tube station on the Piccadilly, Victoria and Jubilee lines. Piccadilly Circus and the amenities and attractions of the West End are close by.

Features

- One Bedroom
- Wooden Flooring
- Modern Fixtures & Fittings
- Galleried Study Space
- Secure Entry Systems
- Excellent Location

Albemarle Street, London, W1S



First Floor

Total area (approx.): 73.0 sq. m (786 sq. ft)