



Dunraven Street, W1K

£3,000 Per week

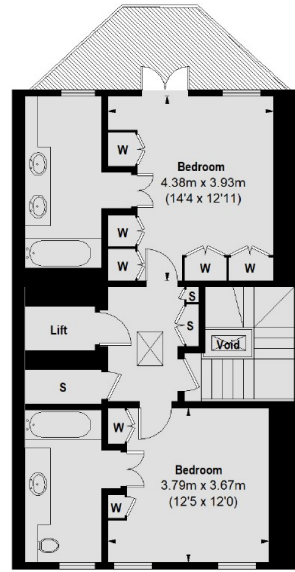
This four bedroom penthouse apartment is arranged over three floors of an imposing building located moments from Hyde Park.

Dunraven Street is perfectly located for some of London's finest restaurants, the green expanses of Hyde Park and excellent transport links, including Marble Arch and Bond Street tube stations.

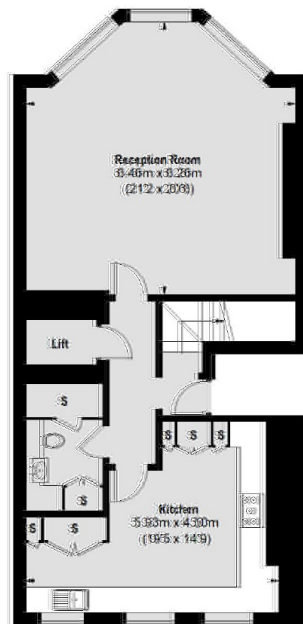
Features

- Four Double Bedrooms
- Direct Lift Access
- Air-Conditioning
- Lovely Balcony
- Views Across Hyde Park
- Wooden Flooring

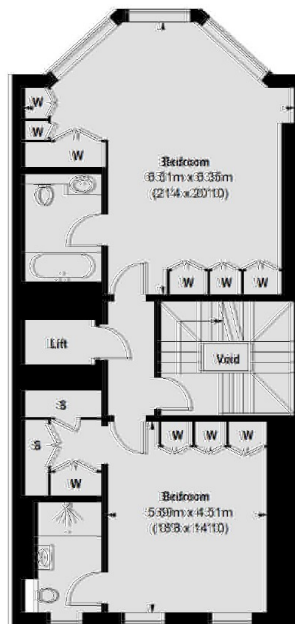
Dunraven Street, London, W1K



Fifth Floor



Third Floor



Fourth Floor

TOTAL APPROX. FLOOR AREA (EXCLUDING VOID) /
(INCLUDING LIFT) 2398 SQ. FT. (222.75 SQ. M.)