



New Burlington Place, W1S

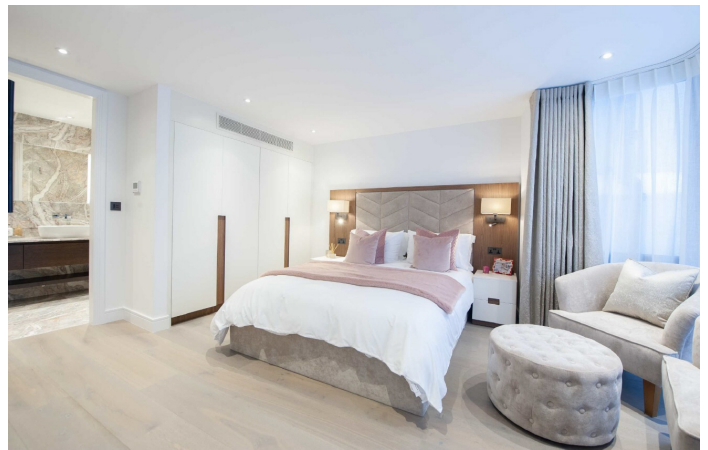
£1,850 Per week

A newly developed, interior designed house set over three floors situated between Bond Street and Regent Street.

New Burlington Place is at the end of Saville Row and so it is conveniently located for the many shopping and transport amenities of Regent Street and New Bond Street.

Features

- Two Double Bedrooms
- Study/Third Bedroom
- Two Luxury Bathrooms
- High Quality Furnishings
- Air-Conditioning
- Excellent Location



New Burlington Place, W1S

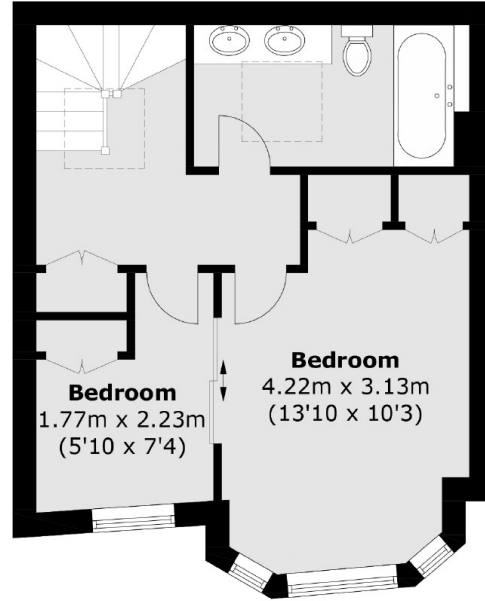
The property comprises two double bedrooms with bespoke built-in storage, top floor bedroom includes additional study space/sleeping space and two award-winning, luxury bathrooms with Italian book-matched marble finishes.

The ground floor comprises an open plan reception room with fully fitted kitchen and guest WC.

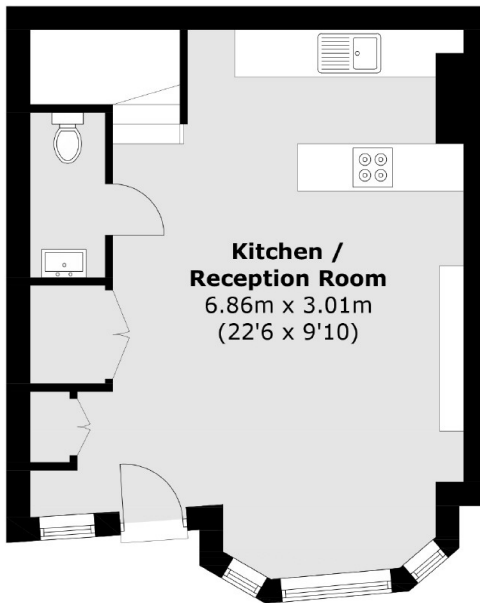
The house has been architectural designed to maximise space, light and storage at all levels.



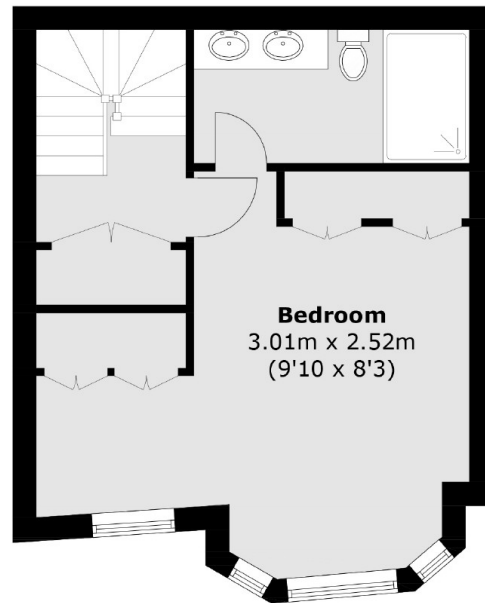
New Burlington Place, London, W1S



Second Floor



Ground Floor



First Floor

Total area (approx.): 104.4 sq. m (1,123.8 sq. ft)