



Green Street, W1K

£1,850 Per week

A stunning duplex two bedroom, two bathroom property, benefitting from a spacious reception room and open plan fully fitted modern kitchen.

Green Street is situated between North Audley Street and Park Lane, and the property is located at the favoured Eastern end. It is well placed for access to the internationally renowned shops and restaurants of Mayfair.

Features

- Two Double Bedrooms
- Two Modern Bathrooms
- Luxury Renovation
- Air Conditioning
- Courtyard
- Duplex Accommodation

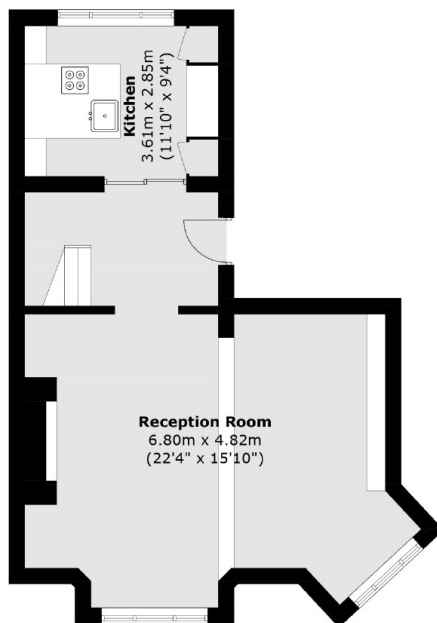


Green Street, W1K

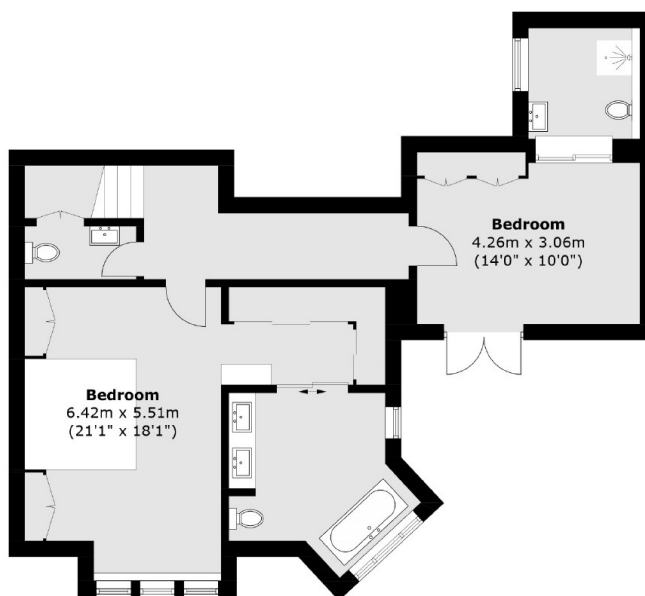
The property has wooden flooring throughout and air conditioning. This flat is situated in the heart of Mayfair just a short walk from Hyde Park and Bond Street.



Green Street, London, W1K



Ground Floor



Lower Ground Floor

Area (approx.): 123.7 sq. m (1,331.5 sq. ft)